

RECHARGING/TESTING MACHINES

FAMILY 05

COD 0440



Technical specifications

Overall size: 1190mm L x 580mm P x 1450mm H	Weight: About 280 Kg.	Power source: 220 Vca - 50/60 Hz	Absorbed power: Max 3 KVA	Max noise: 70 dB (A)
---	---------------------------------	--	-------------------------------------	--------------------------------

SYSTEM FOR RECHARGING AND HYDROSTATIC TESTING OF PORTABLE AND WHEELED CO₂, DRY CHEMICAL, GAS AND FOAM FIRE EXTINGUISHERS, IN COMPLIANCE WITH STANDARD UNI 9994, AND FOR REWINDING AND TESTING OF FIRE HOSES (UNI 25-45-70).

We are leaders in producing and maintaining fire extinguishers of any type, the huge success of our products and the UNI EN ISO 9001 certificate prove it. Our company is pleased to introduce the FAMILY 05 system, an original machinery we designed and created. FAMILY 05 is going to revolutionise the world of maintenance, inspection and testing, both in the workshop and house-to-house. It can recharge and test any kind of fire extinguisher: dry chemical, CO₂, and foam, in addition to UNI 25-45-70 fire hoses, in full compliance with all provisions of the UNI 9994 standard (fire extinguisher maintenance and testing) and in full compliance with law 81/08 (maintenance and testing operation). Thanks to FAMILY 05, it is now possible to give a house to house service, installing the machinery in any kind of maintenance van, with the same quality that could be before attainable only in the workshop through several cumbersome devices. This way, we help you to decrease the maintenance cost and to increase the efficiency of your service, increasing this way the attractiveness of your offer to the clients.

FAMILY 05 includes the operational capacity of more than eight old devices: as a consequence, the investment your firefighting maintenance company had to spend until now will decrease.

HOW TO USE:

Unlike other equipment with the same purpose, the FAMILY 05 system's limited size allows for the recharging and testing both in the workshop or at the client's. It can recharge and test portable and wheeled CO₂, dry chemical, gas and foam fire extinguishers, in compliance with the standard UNI 9994 and rewind and test UNI 25-45-70 fire hoses. Thanks to its limited wattage and the operating voltage at 220V, FAMILY 05 can also be connected to any common electrical system.

RECHARGING/TESTING MACHINES



VACUUM PUMP FOR DRY CHEMICAL

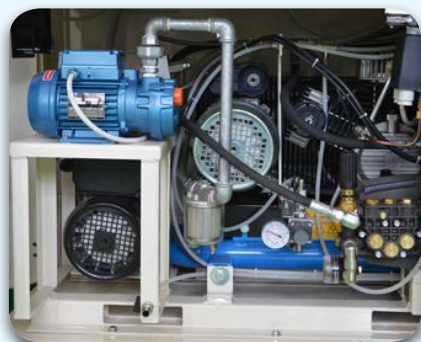
Vacuum pump to empty and recharge dry chemical; the pump comes with protecting filters for the pouring of dry chemical during the recharging.

DIGITAL SCALE

Digital scale, perfect for a more precise recharging of the tank.

PNEUMATIC VISE

Pneumatic vise to block the tank, fundamental during the tightening and the unscrewing of the valves.



AIR COMPRESSOR

Air compressor at 18 bar to pressurize the UNI 25-45-70 fire hoses and for all the usual final cleanings.



HYDRAULIC PUMP

Hydraulic pump suitable for:

- hydrostatic test of fire extinguisher, to test the entirety of the tank;
- hydrostatic test of fire hoses.



WATER RECYCLING STAINLESS STEEL TANK

80 L stainless steel tank, useful in any case it is necessary or more advisable not to waste the water used during the hydrostatic test.

HOT AIR GENERATOR

Hot air generator, essential to dry up the tanks at the end of an hydrostatic testing.



RECHARGING/TESTING MACHINES

HAND REWINDING DEVICE

Hand rewinding device,
with rolls to expell water.

COD 0443



BENCH VISE

COD 0442



PUMP FOR CO2

Pump for the flowing of CO2, essential for the recharging of CO2
fire extinguishers from a cylinder to the fire extinguisher.



CONNECTION FOR UNI 45/70 JOINT



COD 0445

RACK FOR CYLINDERS

Rack for cylinders to be installed in the equipped
van or in the workshop.



COD 0444

RECHARGING/TESTING MACHINES



Technical Specifications

Size:	Weight:
H = 988mm - L = 529mm - P = 477mm	61 Kg.
Max flow rate pump:	Motor:
8 Lt/min a 120 ATM	1,8 Kw - 1450 rpm - 50Hz
Power at 220V	

Device for hydrostatic testing up to 34ATM for portable fire extinguishers' tanks and up to 12/15ATM for fire hoses UNI 70 and UNI 45, with 10 L water tank and 30x1.5 joint.



COD 5001

Technical specifications	
Size:	Weight:
H = 130mm - L = 1000mm - P = 670mm	57 Kg.
Power at 220V	

COD 5002

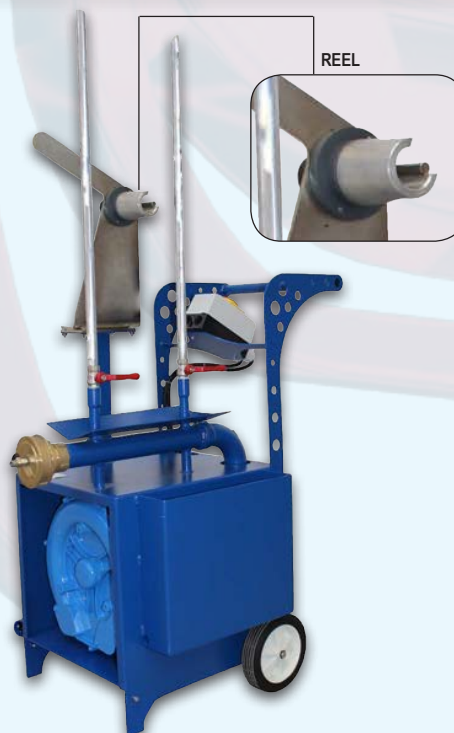
Device for drying up the fire extinguishers and the fire hoses, with rewinder.

COMPONENTS

Toroidal fan type motor 220V - 1,5 Hp - 50 Hz

Adapter for fire hoses UNI 70.

Cap UNI 45



RECHARGING/TESTING MACHINES

CARBON DIOXIDE PUMP

COD 1192

This device recharges fire extinguishers or carbon dioxide cylinders by compressing liquid high-pressure CO2 right in the tank. It can be used with tanks or cylinders from 0.2 to 45 Kg. It has an universal quick joint with air valve.

Technical Specifications	
Size:	H = 540mm - L = 620mm - P = 220mm
Dry weight:	45 Kg.
Single phase motor:	220V - 3 Hp - 2800 giri/min
Charging speed:	8 Kg./min



The SVA C02 helps with the tightening and unscrewing of valves on any CO2 tank. It has a pneumatic vise that can block 2-50 Kg tanks. The locking is automatic and can be setted with a keyboard. Controls are bimanual, in compliance with safety standards.

COMPONENTS

Steel fire-varnished frame
 Locking arm that can be extended, from 90 cm to 2 metres.
 Adjustable universal key from 24 to 51 mm.
 three-phase electric motor with speed limiter.
 Control board with inverter.

COD 9479

Technical Specifications	
Size:	H=2900-3900 mm L=1100-1400 mm P=650
Weight:	250 Kg
Power:	220V single-phase or 380V three-phase

RECHARGING/TESTING MACHINES



Powder-collector kegs, to be used during the emptying of dry chemical fire extinguishers, in compliance with safety standards. For maintenance and testing, wherever these operations are actuated.

COD 0441

POWDER-COLLECTOR KEGS

Technical specifications

Size:	Weight:
H = 600 Diam. 450 mm	Circa Kg 25
Max load 30 Kg ABC dry chemical 40%	

COMPONENTS

- Pressure gauge (to measure the inner pressure)
- Safety valve.
- Quick disassembling cover.
- 1.5 m hose with quick joint to discharge directly from the fire extinguishers.
- Baking-varnished steel plate external case.
- Handlebars.

COD 1643



Devices are safe metal tanks, with 2 air filters made with special materials. You can directly discharge the dry chemical in them from the pressurised fire extinguisher.

COD 9430

Devices are safe, baking-varnished, metal tanks to collect the powder.

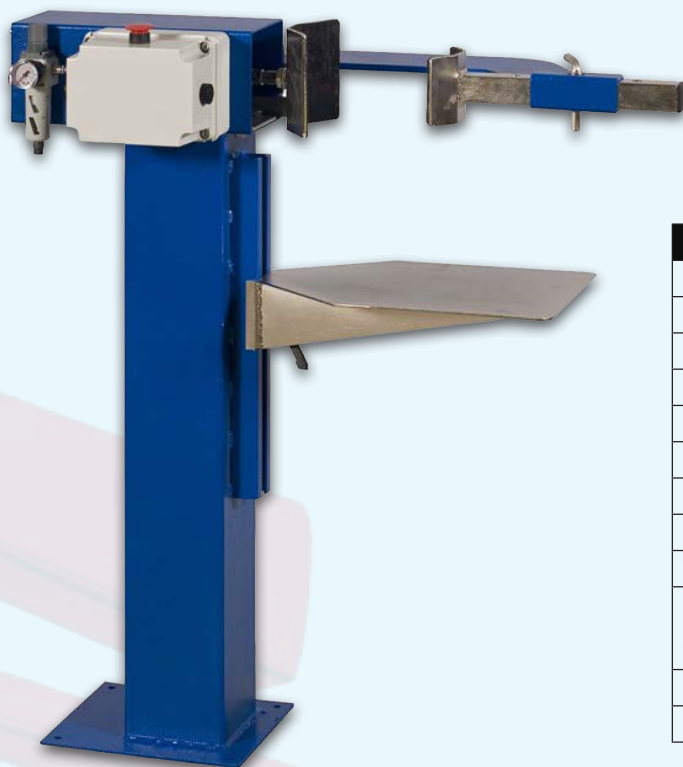


COMPONENTS

- Dry chemical opening, 60 mm diameter
- Opening adapter COD. 9628 - 1319 - 1317
- Fast disassembling cover.
- Handlebars.

RECHARGING/TESTING MACHINES

PNEUMATIC VISE WITH BASE



COD 1316

Technical Specifications

Size:
H = 1200mm - L = 1050mm - P = 400mm
Lockable diameters:
da 80 a 260mm
Supporting base:
removable
Power supply:
pneumatic max 10 atm
Types of lockable fire extinguishers:
Dry chemical and CO2 fire extinguishers–Kg 45 CO2 cylinders / Dry chemical and CO2 fire extinguishers – Kg 50 CO2 cylinders- Tanks for fire sprinkler systems
Max locking force:
628 Kg.

SELFSTANDING PNEUMATIC VISE AND BASE FOR TANK STARTER



COD 1315

Technical Specifications

Size
H = 1020mm - L = 1250mm - P = 680mm
Lockable diameters:
da 80 a 320mm
Supporting base:
removable
Power supply:
pneumatic max 10 atm
Types of lockable fire extinguishers:
Dry chemical and CO2 fire extinguishers – Kg 50 CO2 cylinders- Tanks for fire sprinkler systems
Max locking force:
982 Kg.

RECHARGING/TESTING MACHINES



This machine device recovers the disposed dry chemicals without any kind of environmental pollution. It recovers the powder in 1000 Kg sacks directly from pressurised or non-pressurised, portable or wheeled fire extinguishers. The controls, both electrical and pneumatic, are in two easily-reachable control units. The recovery speed is about 3000 Kg of powder a day. The device has three couplings for the discharging of the fire extinguishers: an aluminium pipe for the aspiration from non-pressurised tanks; a quick joint with high-pressure hose for wheeled and special; a flanged rubber diaphragm with calibrated hole to directly discharge the portable fire extinguisher without the need of disassembling the hose.

COD 1605

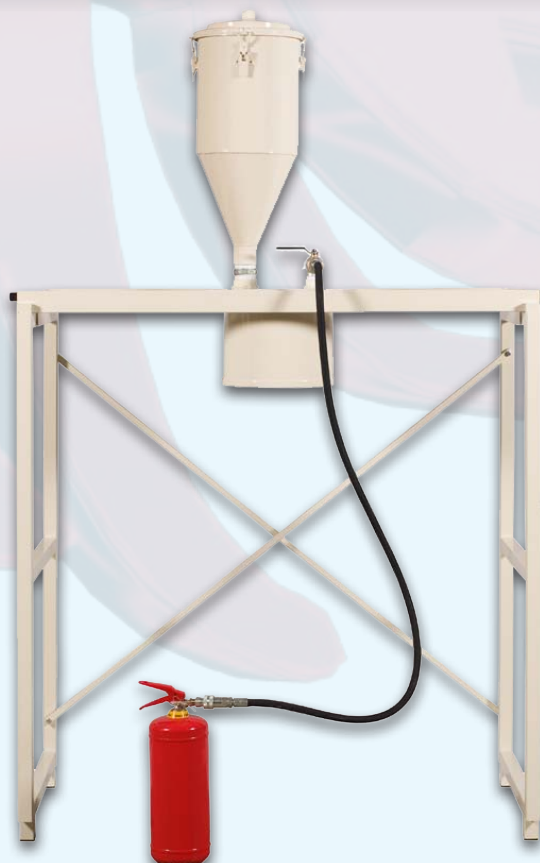
COMPONENTS

- N. 1 400 Kg dry chemical baking-varnished silo with filters and pneumatic ball valves.
- N° 1 pneumatic butterfly valve DN 250 for the discharging of the silo.
- N. 1 control unit for the pneumatic valves.
- N. 1 electrical control box, including: start and stop selector; voltage and operating motor warning lights; general switch.
- Electrical high prevalence toroidal fan motor (2.2 KW 380 V).
- N. 1 pipe with quick coupling for the discharging of pressurised fire extinguishers.
- N° 1 flexible pipe with 2 aluminium pipes with different diameter for the aspiration of residual powder.
- N° 1 flanged rubber diaphragm

Modular metal structure for the direct discharging of pressurised fire extinguishers in 1000 Kg big-bags. With absolute powder filter, able to decrease the pressure with no consequence for the environment, high-pressure hose with quick couplings for portable and wheeled fire extinguishers.

COD 9478

DISCHARGING FIRE EXTINGUISHER MACHINE



RECHARGING/TESTING MACHINES

EQUIPMENT FOR THE LOADING AND DISCHARGING OF DRY CHEMICAL FIRE EXTINGUISHERS

Equipment for the loading and discharging of any type of dry chemical fire extinguisher, both wheeled and portable. They can be carried by car and can be adapted on vans. Quiet and extremely easy to use, with almost unlimited operating conditions, they can be operated with no dry chemical pollution.



COD 1319

Size:	Lunghezza cavo:
H = 1780mm - L = 500mm - P = 570mm	6 metres
Flow rate:	Noise:
about 10Kg dry chemical a min. (according to the type of dry chemical)	69 db/A
Motor:	Weight:
dry aspirator 220V/50Hz 1000W Prevalence 2000mm	48,5 Kg.

Size:	Weight
H = 1780mm - L = 500mm - P = 870mm	74,5 Kg.
Motor:	Noise:
aspirator with asynchronous motor 220 o 380 V - IP 54 - HP 1,5	65 db/A
Flow rate: About 15Kg dry chemical a min. (depending on the type of dry chemical)	



COD 1317



COD 9628

Accessory for transferring dust away from the loading machine. The operation is as follows:

Place the rubber cone on the tank to be loaded, Connect the hose of the machine Code 1317/1319 to the attack side of the accessory,

Start the engine and remove all dust through the hose placed over the cone. The tapered rubber can be unscrewed and applied directly to the machine.

COMPONENTS

Cone molded rubber 120 mm diam. - Made of machined aluminum -
Flexible tubing black L = 1700 mm

SLIDE



Accessory for machines that lets the machine itself be moved in vans in addition to loading the wheeled fire extinguisher tanks.

Size: H=400 mm - L=500mm - W=900 mm

COD 5003

COMPONENTS

- N° 2 sled to fasten to the loading bed of the van L=900 mm.
- automotive, baking-varnished frame for slot of Silo supporting pole
- N° 8 bogies with double wheel.
- N° 2 removable locks.

