

Use and Maintenance Manual



www.emme-italia.com

Via del Molino, 40 - 52010 Corsalone (AR) - Italy - info@emme-italia.com - Tel. +39.0575.511320
P.IVA/ C.F. 11208251006 - R.E.A. AR-159122

Powder Wheeled Fire Extinguishers – Stored Pressure

FILE NAME: CPP_1_ENG

Maintenance periods for efficiency guarantee, methods and subjects accredited for maintenance

1) GENERAL REQUIREMENTS

All Fire Fighting Fire Extinguishers produced by Emme Antincendio must be installed, inspected and maintained in accordance with the following manual and with the rules in force in the country of destination.

All fire extinguishers must be recharged after partial use with original spare parts.

Every ordinary / extraordinary maintenance operation must be carried out using original spare parts and compliant with the declared certified prototype. The described below maintenance operations must be carried out by recognized personnel qualified by the company Emme Antincendio.

Fire extinguishers are classified into two categories that provide for specific construction standards:

- portable fire extinguishers: fire extinguishers designed to be transported and operated by hand, with a mass not exceeding 20 kg under operating conditions. Reference standard: EN 3-7
- wheeled fire extinguishers: wheel fire extinguishers designed to be transported and operated by hand, with a mass greater than 20 kg. Reference standards: EN 1866-1

Moreover, in relation to the extinguishing agent contained in them, they are identified in:

- water based fire extinguishers including foam extinguishers;
- powder fire extinguishers;
- carbon dioxide fire extinguishers;
- clean agent extinguishers

2) REFERENCE RULES

Fire Extinguishers produced by Emme Antincendio are manufactured in compliance with the following rules:

- EN 3-7: 2008 Portable fire extinguishers;
- EN 1866-1: 2008 Wheeled fire extinguishers;
- PED Directive 2014/68/EU pressure equipment;
- MED Directive 2014/90/EU devices for marine use (only for products bearing the relative MED certification mark, check the manual of specific model)

3) INSTALLATION

- 1) Install the fire extinguisher in spacious areas, without obstacles.
- 2) Do not expose the fire extinguisher to the atmospheric agent or chemical agent.
(In this case protect the fire extinguisher with suitable cover)
- 3) Do not expose the fire extinguisher to the direct sunlight.
- 4) Verify that the gauge pressure indicator is inside the green area.
- 5) Keep children away from fire extinguisher.
- 6) For Marine equipment or outdoor installation we recommend use of cover.

File name	Type of document	Fire Extinguisher Model	Date	Rele.	Check	Rev.	Pag.
CPP_1_ENG	Use and maintenance manual	Powder	27/02/2025	S.R.		3	1/4

Powder Wheeled Fire Extinguishers – Stored Pressure

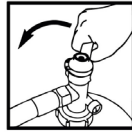
4) MODALITY AND PRECAUTIONS FOR THE USE

Follow the operating Instructions printed on the main fire extinguisher label.

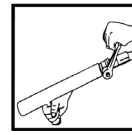
Generally, the correct steps for use the fire extinguisher are as below:



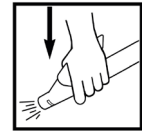
- 1) UNROLL THE HOSE
- 2) REMOVE SAFETY PIN



- 3) OPEN THE VALVE



or



- 4) HOLD THE LANCE, AIM AT BASE OF FIRE AND ACTIVATE THE LEVER

- Do not through the fire extinguisher on to the direct flames.
- This fire extinguisher is a pressurized vessel and must not be pierced, dented or subjected to external damage.
- Do not direct the jet on the people.

5) STEPS AND FREQUENCY RELATED TO MAINTENANCE OPERATIONS

*NOTE : Inspection intervals may vary from country to country, local legal requirements must be followed. The subsequent activities in order of time includes already the previous activities.

Table 1

	Step	Periodicity	Reference	Type of Activity
5.1	Visual inspection	1 Year	From commissioning date	Visual inspection
5.2	Maintenance	5 Years	From manufacturing date indicated on declaration of conformity	Check status of extinguishing agent, cylinder and valve.
5.3	Maintenance and testing	10 Years	From date marked on cylinder	Hydraulic test of cylinder and replace the valve. ⁽¹⁾
5.4	Life Time	20 Years ⁽²⁾	From manufacturing date indicated on declaration of conformity	Is recommended to replace the fire extinguisher

Note:

- (1) Replacement of valve: only for dispensing valves with safety device.
- (2) Life time : If fire extinguisher is located in particular environments the time can be reduced. (Is recommended 10 years)

5.1) Visual inspection: (does not require the intervention of a specialized technician)

* Comply with national provisions and regulations

1	Check the stability and the correct wheel handling. Check the condition of the marking label, replace if necessary.
2	Check the correct internal pressure using the pressure gauge installed on fire extinguisher or use an independent tool.
3	Check the status of safety seal and safety pin.
4	Check that discharge devices (hose, lance) are without damage signs or obstruction, if necessary remove devices and check the correct internal passage with compressed air.
5	Record the inspection activity on the maintenance tag and on the fire protection register

REPRODUCTION IS PROHIBITED

File name	Type of document	Fire Extinguisher Model	Date	Rele.	Check	Rev.	Pag.
CPP_1_ENG	Use and maintenance manual	Powder	27/02/2025	S.R.		3	2/4

Powder Wheeled Fire Extinguishers – Stored Pressure

5.2) Maintenance

1	Check the stability and the correct wheel handling. Check the condition of the marking label, replace if necessary.
2	Discharge the fire extinguisher, comply at rules for a correct disposal.
3	Screw off and remove the dispensing valve.
4	Check internally the cylinder and make sure that are no signs of corrosion and powder agglomerations.
5	Check that discharge devices (hose, lance) are without damage signs or obstruction, if necessary remove devices and check the correct internal passage with compressed air.
6	Check the conditions of extinguishing powder, so perform a chemical-physical analysis in according to the reference regulations, this for to be sure that initial efficiency is maintained. If powder is suitable can be reused for recharge the fire extinguisher.
7	Check the status of dispensing valve, if necessary replace with a new one. Screw back the valve with a tightening torque as indicated in table 2 at page 4.
8	Pressurize the fire extinguisher and then check if there are losses. Follow what is indicated in technical manual of specific product for the correct pressure setting.
9	Reinsert the safety pin and its relative seal, reinsert the dispensing devices (hose, nozzle).
10	Record the inspection activity on the maintenance tag and on the fire protection register.

5.3) Maintenance and testing

At least every 10 years from the production date marked on cylinder, this one must be overhauled by a hydraulic pressure test in accordance with the pressure values "PT" stamped on the cylinder.

1	Check the stability and the correct wheel handling. Check the condition of the marking label, replace if necessary.
2	Discharge the fire extinguisher, comply at rules for a correct disposal.
3	Screw off and remove the dispensing valve.
4	Check internally the cylinder and make sure that are no signs of corrosion and powder agglomerations.
5	Hydraulic test with special machinery: keep the hydraulic pressure at the "PT" value for 30 seconds and proceed with depressurization. Check the cylinder general condition.
6	Proceed with rinsing/removal of any residuals and then dry the inside of cylinder with specific tool.
7	Check that discharge devices (hose, lance) are without damage signs or obstruction, if necessary remove devices and check the correct internal passage with compressed air.
8	Check the conditions of extinguishing powder, so perform a chemical-physical analysis in according to the reference regulations, this for to be sure that initial efficiency is maintained. If powder is suitable can be reused for recharge the fire extinguisher.
9	Replace the dispensing valve with a new one (this is request only for valves equipped with safety device). Screw back the valve with a tightening torque as indicated in table 2 at page 4.
10	Pressurize the fire extinguisher and then check if there are losses. Follow what is indicated in technical manual of specific product for the correct pressure setting.
11	Reinsert the safety pin and its relative seal, reinsert the dispensing devices (hose, nozzle).
12	Record the inspection activity on the maintenance tag and on the fire protection register.

REPRODUCTION IS PROHIBITED

File name	Type of document	Fire Extinguisher Model	Date	Rele.	Check	Rev.	Pag.
CPP_1_ENG	Use and maintenance manual	Powder	27/02/2025	S.R.		3	3/4

Powder Wheeled Fire Extinguishers – Stored Pressure

5.4) End Life Time

At End of life, fire extinguishers must be disposed in accordance with local waste management rules. Before disposal or disassembly, the fire extinguisher MUST BE DEPRESSURIZED by a qualified technician. Fire extinguishers should always be disposed of through an approved disposal company and in accordance with applicable local and national codes.

* If the fire extinguisher is located in particular environments, the "life time" timing can be reduced (see table 1 at point 5.4)

6) SPARE PARTS LIST AND MAINTENANCE TOOLS

6.1) Spare parts list

For the list of spare parts and component, check the technical manual of specific product. For more details visit web site www.emme-italia.com

6.2) Maintenance tools

For a complete list of recommended tools see web site www.emme-italia.com. It is recommended to use instruments with controlled calibration and periodically verified (at least every 12 months) with certified sample instrument.

Table 2 Tightening Torques

Use the below table as reference for the correct torque of valve and accessories, for installation and maintenance activity. Use only compliant and calibrated torque wrench.

*Check on the specific technical manual of fire extinguisher the valve and cylinder type

Valve Type	Cylinder Type	Torque	
		Min.	Max.
2"-F, brass body	Steel Alloy	60 Nm	70 Nm

File name	Type of document	Fire Extinguisher Model	Date	Rele.	Check	Rev.	Pag.
CPP_1_ENG	Use and maintenance manual	Powder	27/02/2025	S.R.		3	4/4