

# Technical Manual



www.emme-italia.com

Via del Molino, 40 - 52010 Corsalene (AR) - Italy - info@emme-italia.com - Tel. +39.0575.511320  
Other branches in Italy : Milano - Padova - Roma - Palermo - Cagliari - P.IVA/ C.F. 11208251006 - R.E.A. AR-159122

## GW6A 32066-701 : Portable Fire Extinguisher, 6 L Foam



### FLUORINE FREE

- **CYLINDER**  
In high-strength alloy steel, with clip, deep drawing, external powder painting Red Ral 3000.
- **EXTINGUISHING AGENT**  
Fluorine free foam, water based.
- **PROPELLANT**  
Auxiliary pressure.  
Fire extinguisher pressurized at moment of use with 60g CO<sub>2</sub> cartridge.
- **VALVE**  
M. 74x2, lightweight aluminum alloy, activation with percussion method .
- **USE**  
A B F fire rating  
(solid materials, flammable liquids, cooking oils).

CLIP DETAIL



*Note: image is for illustrative purpose only, the product purchased can has some difference*

6 L foam fire extinguisher, auxiliary pressure, temperature range from +5°C to +60°C, manufactured in accordance to **UNI EN 3-7**, certified according to the directive for pressure equipment PED 2014/68/EU.

Manufactured according at productions checks as agreed with **EN 3-10**.

Quality Product certification guaranteed by Bureau Veritas Italia.

Suitable for use on fire involving electrical voltages up to 1'000 V, at a minimum distance of 1 meter.

APPROVED/CERTIFIED FIRE EXTINGUISHER:



**FIRE  
RATING :**



File name	Type of document	Fire Extinguisher Model	Date	Rele.	Check	Rev.	Pag.
32066-701_GW6A_Technical manual	Technical manual	GW6A_32066-701	28/05/2024	M.R		2	1/3

REPRODUCTION IS PROHIBITED

# GW6A 32066-701 : Portable Fire Extinguisher, 6 L Foam

## • INSTALLATION

The installation and the control and/or recovery operations of fire extinguisher must be performed by qualified technician and in accordance to current regulations on the matter.

## • USE

## • MAINTENANCE

The technician will carry out annual inspection for check the internal pressure and after all other steps planned during the fire extinguisher useful life.

Any tampering or operation performed by unqualified technician, void the product warranty.

If possible, is recommended to place fire extinguisher in a dry place, protected from atmospheric agents.

**For installation, use and maintenance follow as indicated in file : PSA\_1\_ENG**

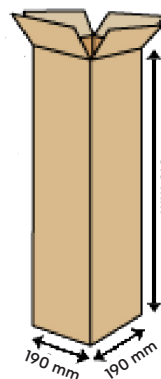
## TECHNICAL SPECIFICATIONS

FIRE RATING	27 A 144 B 40 F
EXTINGUISHING AGENT	100% Green Wave Premix
PROPELLANT	Cartridge with 60 g CO <sub>2</sub>
TEMPERATURE RANGE	+5°C / +60°C
NOMINAL CHARGE	6 Liters
FULL WEIGHT	~ 10,60 Kg
DIMENSIONS	Height (base - valve) 510 +/- 5 mm (with bottom) Diameter (cylinder) 162 +/- 2 mm
DISCHARGE TIME	~ 35,3 seconds
CYLINDER PRESSURE TEST	PT 30 bar
CYLINDER VOLUME	7,30 L
SAFETY DEVICE	Set between 22 and 27 bar
CYLINDER MATERIAL	Alloy steel
TREATMENT	Outside: Sandblast and powder painting, Ral 3000 Inside: Plastic coating

## PACKAGING

(Note: quantities and measurements are indicative and can be subject at changes)

STANDARD  
Maximum nr. 60 pieces for pallet  
(single packaging )  
Pallet dimensions 100x120 cm



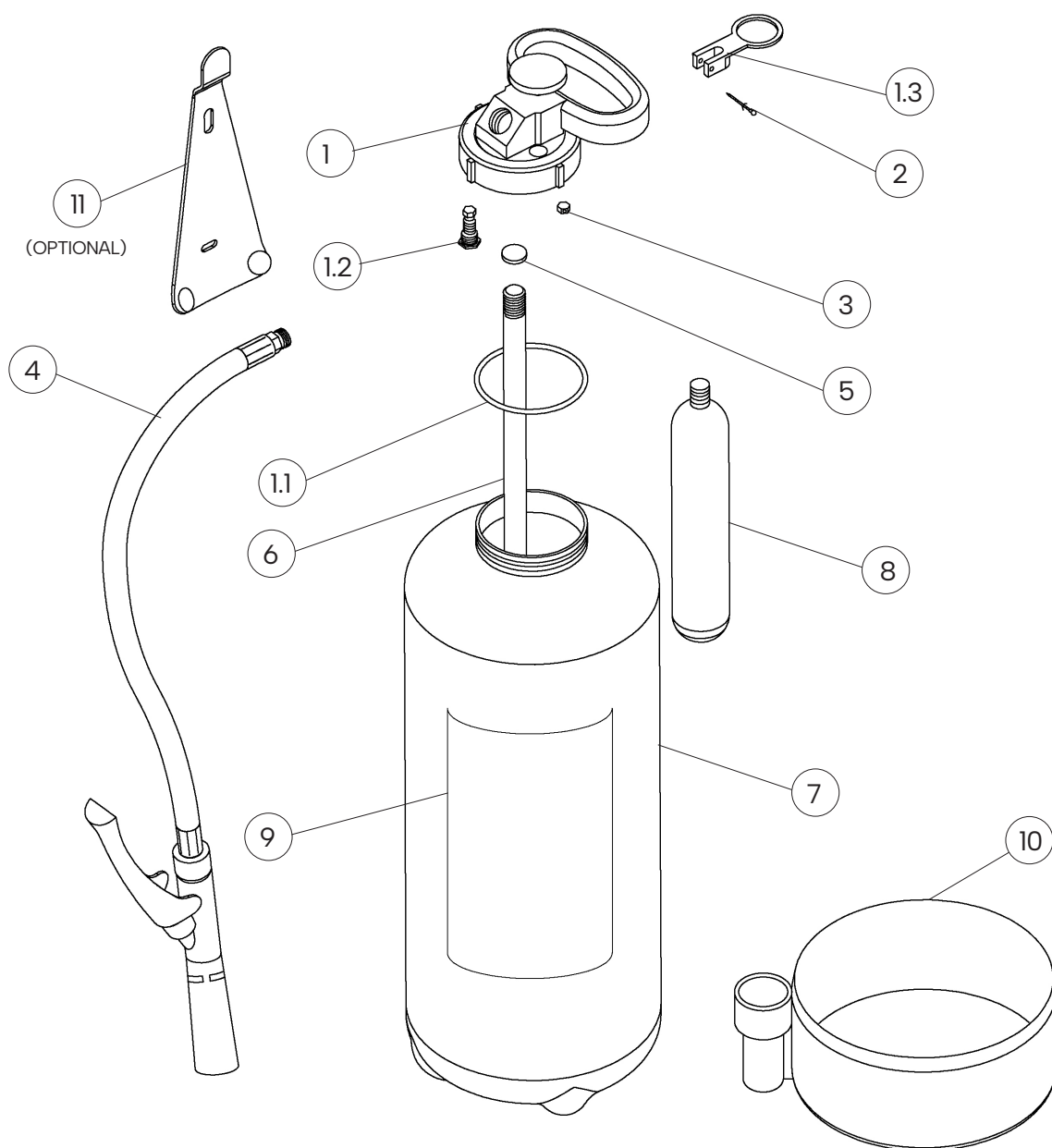
## TRANSPORT DISPOSAL

Land transport : Exemption for the purposes of ADR disposal 594  
Ship Transport : IMDG Code – UN 1044 class 2.2 Fire Extinguishers

File name	Type of document	Fire Extinguisher Model	Date	Rele.	Check	Rev.	Pag.
32066-701_GW6A_Technical manual	Technical manual	GW6A_32066-701	28/05/2024	M.R		2	2/3

# GW6A 32066-701 : Portable Fire Extinguisher, 6 L Foam

## COMPONENTS AND SPARE PARTS LIST



NUM.	DESCRIPTION	CODE
1	Valve M. 74x2	3008
1.1	O-ring valve	0201-5
1.2	Safety device	n.a.
1.3	Safety pin	n.a.
2	Safety pin seal	0285
3	Pressurization cap	3033-2
4	Hose with dispensing nozzle	2297-IV
5	Bursting disk for dip tube	0262-32

NUM.	DESCRIPTION	CODE
6	PVC dip tube with filter	2179-3
7	Cylinder	3007
8	CO <sub>2</sub> cartridge 60 g	3029-2
9	Label	2246-701
10	Plastic bottom	3028-2
11 OPTIONAL	Wall-mounted bracket for fire extinguisher with clip	3036

The spare part at number 1 includes already all others components indicated from 1.1 to 1.3  
"n.a." mean that the component is not available as single spare part

File name	Type of document	Fire Extinguisher Model	Date	Rele.	Check	Rev.	Pag.
32066-701_GW6A_Technical manual	Technical manual	GW6A_32066-701	28/05/2024	M.R		2	3/3

REPRODUCTION IS PROHIBITED