

Technical Manual



SAFETY
FOR
FUTURE



www.emme-italia.com

Via del Molino, 40 - 52010 Corsalene (AR) - Italy - info@emme-italia.com - Tel. +39.0575.511320
P.IVA/ C.F. 11208251006 - R.E.A. AR-159122

24063-3 : Portable Fire Extinguisher, 6 Kg ABC Powder



CLIP DETAIL



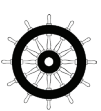
- **CYLINDER**
In high-strength alloy steel,
3 pieces drawing, with clip, external
powder painting Red Ral 3000.
- **EXTINGUISHING AGENT**
ABC Powder - MAP 20 %.
- **PROPELLANT**
Auxiliary pressure.
Fire extinguisher pressurized at
moment of use with 150g CO₂ in
cartridge.
- **VALVE**
M. 74x2, lightweight aluminum alloy,
activation with percussion method.
- **USE**
A B C fire rating
(solid materials, flammable liquids,
flammable gas).

Note: image is for illustrative purpose only, the product purchased can has some difference

6 Kg powder fire extinguisher, auxiliary pressure, temperature range from -30°C to +60°C, manufactured in accordance to **UNI EN 3-7 (D.M. 7.1.2005)**, approved Marine Equipment Directive **MED 2014/90/EU**, certified according to the directive for pressure equipment PED 2014/68/EU. Manufactured according at productions checks as agreed with **EN 3-10**. Quality Product certification guaranteed by Bureau Veritas Italia.

Suitable for use on fire involving electrical voltages up to 1'000 V, at a minimum distance of 1 meter.

APPROVED/CERTIFIED FIRE EXTINGUISHER:



MPA
Dresden



EN 3-10
Inspection Certificate
N° 55840/21/NMI/nmj



FIRE
RATING :



34



233



✓

File name	Type of document	Fire Extinguisher Model	Date	Rele.	Check	Rev.	Pag.
24063-3_Technical manual	Technical manual	24063-3	27/05/2025	S.R		3	1/3

REPRODUCTION IS PROHIBITED

24063-3 : Portable Fire Extinguisher, 6 Kg ABC Powder

• INSTALLATION

The installation must be carried out in accordance with the provisions in force in the country where the device is used.

• USE

The commissioning and maintenance activities for maintaining efficiency must be

• MAINTENANCE

carried out in accordance with the document **EPA_1_ENG** by qualified technical personnel and in compliance with the regulations in force in the country of use.

Any tampering or intervention carried out by unqualified personnel will void the product warranty.

It is recommended to place the device in a dry place protected from atmospheric agents.

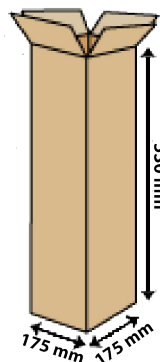
TECHNICAL SPECIFICATIONS

FIRE RATING	34 A 233 B C
EXTINGUISHING AGENT	ABC powder - MAP 20 % EPW 18462 (ABC Favorit Tertia - Rühl)
PROPELLANT	Cartridge with 150g CO ₂
TEMPERATURE RANGE	-30°C / +60°C
NOMINAL CHARGE	6 Kg
FULL WEIGHT	(without bracket 3036) ~ 10,5 Kg
DIMENSIONS	Height (base - valve) 515 +/- 5 mm Diameter (cylinder) 152 +/- 2 mm
DISCHARGE TIME	~ 15,4 seconds
CYLINDER PRESSURE TEST	PT 30 bar
CYLINDER VOLUME	6,89 L
SAFETY DEVICE	Set at 24 +/- 2 bar
CYLINDER MATERIAL	Alloy steel
TREATMENT	Outside: Sandblast and powder painting, Ral 3000

PACKAGING

(Note: quantities and measurements are indicative and can be subject at changes)

STANDARD
Maximum nr. 60 pieces for pallet
(single packaging)
Pallet dimensions 100x120 cm



TRANSPORT DISPOSAL

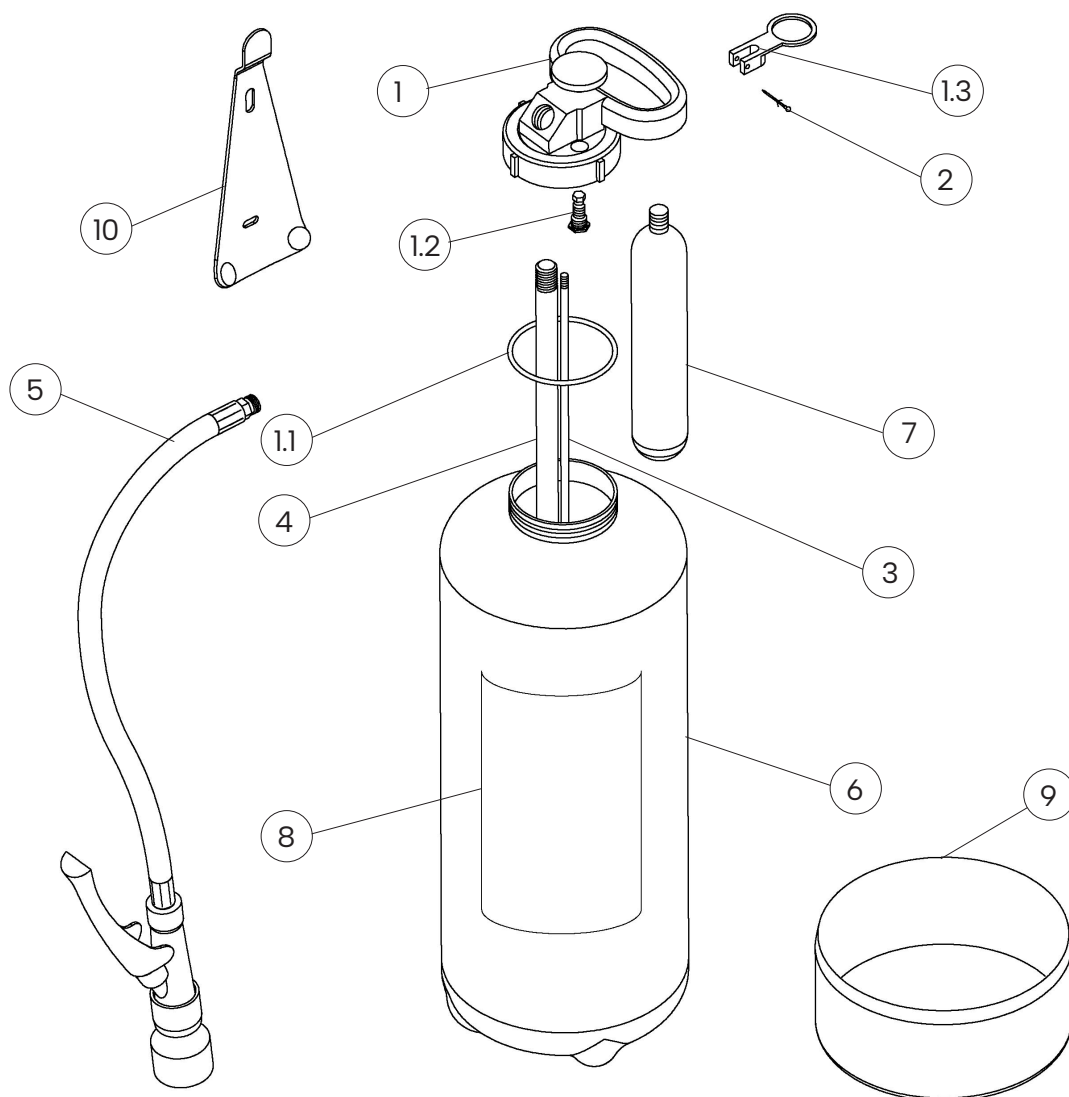
Land transport : Exemption for the purposes of ADR disposal 594

Ship Transport : IMDG Code - UN 1044 class 2.2 Fire Extinguishers

File name	Type of document	Fire Extinguisher Model	Date	Rele.	Check	Rev.	Pag.
24063-3_Technical manual	Technical manual	24063-3	27/05/2025	S.R		3	2/3

24063-3 : Portable Fire Extinguisher, 6 Kg ABC Powder

COMPONENTS AND SPARE PARTS LIST



NUM.	DESCRIPTION	CODE
1	Valve M. 74x2	3008-1
1.1	O-ring valve	0201-5
1.2	Safety device	n.a.
1.3	Safety pin	n.a.
2	Safety pin seal	0285
3	Pressurization tube	3033-3
4	PVC dip tube	3033

NUM.	DESCRIPTION	CODE
5	Hose with dispensing nozzle	3014
6	Cylinder	n.a.
7	CO2 cartridge 150 g	3030
8	Label	3015
9	Plastic bottom	3028-3
10	Wall-mounted bracket for fire extinguisher with clip	3036

The spare part at number 1 includes already all others components indicated from 1.1 to 1.3

"n.a." mean that the component is not available as single spare part

File name	Type of document	Fire Extinguisher Model	Date	Rele.	Check	Rev.	Pag.
24063-3_Technical manual	Technical manual	24063-3	27/05/2025	S.R		3	3/3