

Technical Manual



SAFETY
FOR
FUTURE



www.emme-italia.com

Via del Molino, 40 - 52010 Corsalone (AR) - Italy - info@emme-italia.com - Tel. +39.0575.511320
Other branches in Italy : Milano - Padova - Roma - Palermo - Cagliari - P.IVA/ C.F. 11208251006 - R.E.A. AR-159122

GW25P 19258-400 : Wheeled Fire Extinguisher, 25 L Foam



FLUORINE FREE



DISPENSING PISTOL WITH
ROTATING CONNECTION

- **CYLINDER**
Stainless steel AISI 304,
powder painting, Red Ral 3000.
- **EXTINGUISHING AGENT**
Fluorine free foam, water based.
- **PROPELLANT**
Nitrogen (N₂).
- **VALVE**
2"-F, brass body, lever with green
painting Ral 6018.
- **USE**
A B fire rating
(solid materials, flammable liquids).
- **BRACKET**
Chassis on wheels, welded at the
cylinder, red painting Ral 3000.
- **DISPENSING PISTOL**
Body in plastic material.
The rotating connection allow an easy
unroll of hose.

Note: image is for illustrative purpose only, the product purchased can have some differences

25 L foam wheeled fire extinguisher, temperature range from +5°C to +60°C, manufactured in accordance to **UNI EN 1866-1**, certified according to the directive for pressure equipment PED 2014/68/EU. Quality Product certification guaranteed by Bureau Veritas Italia. Suitable for use on fire involving electrical voltages up to 1'000 V, at a distance of 1 meter.

APPROVED\CERTIFIED FIRE EXTINGUISHER:



FIRE
RATING :



File name	Type of document	Fire Extinguisher Model	Date	Rel.	Check	Rev.	Pag.
19258-400_GW25P_ Technical Manual	Technical Manual	GW25P_19258-400	04/06/2024	M.R		2	1/3

REPRODUCTION IS PROHIBITED

GW25P 19258-400 : Wheeled Fire Extinguisher, 25 L Foam

• INSTALLATION

The installation and the control and/or recovery operations of fire extinguisher must be performed by qualified technician and in accordance to current regulations on the matter.

• USE

• MAINTENANCE

The technician will carry out annual inspection for check the internal pressure and after all other steps planned during the fire extinguisher useful life.

Any tampering or operation performed by unqualified technician, void the product warranty.

If possible, is recommended to place fire extinguisher in a dry place, protected from atmospheric agents.

For installation, use and maintenance follow as indicated in file : CSP_1_ENG

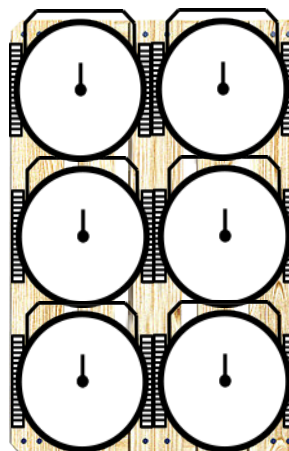
TECHNICAL SPECIFICATIONS

FIRE RATING	A IV B
EXTINGUISHING AGENT	100% Green Wave Premix
PROPELLANT	Nitrogen (N ₂), 15 Bar at 20°C
TEMPERATURE RANGE	+5°C / +60°C
NOMINAL CHARGE	25 Liters
FULL WEIGHT	~ 44 Kg
DIMENSIONS	Height 930 +/- 10 mm ; Width 425 +/- 10 mm Depth 430 +/- 15 mm
DISCHARGE TIME	~ 163 seconds
CYLINDER PRESSURE TEST	PT 30 bar
CYLINDER VOLUME	31 L
SAFETY DEVICE	Set between 21 and 26 bar
CYLINDER MATERIAL	Stainless steel AISI 304
TREATMENT	Outside: Sandblast and powder painting Ral 3000

PACKAGING

(Note: the packaging quantities and measurements are indicative and can be subject at change)

STANDARD
Maximum nr. 6 pieces for pallet
Pallet dimensions 100x120x120(h) cm



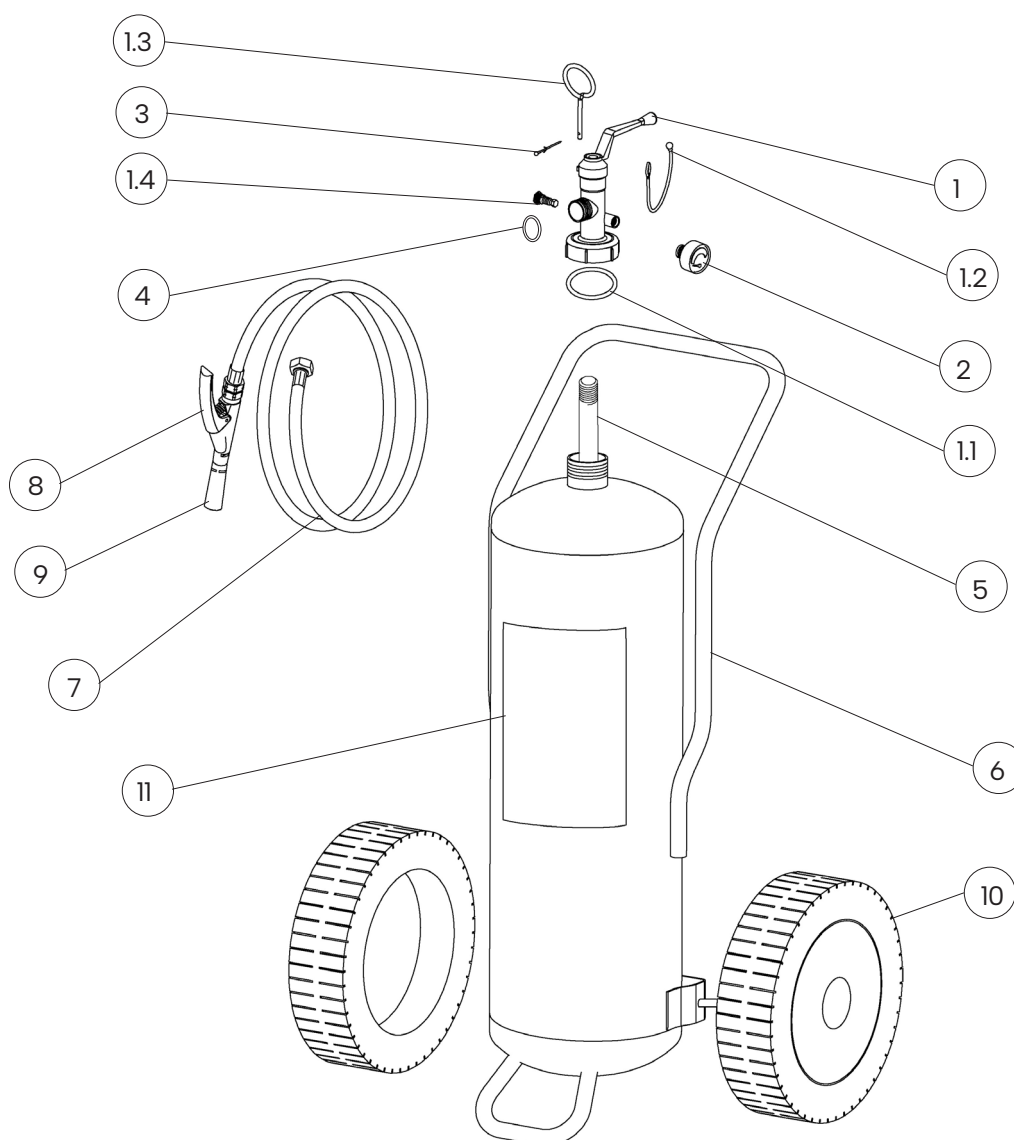
TRANSPORT DISPOSAL

Land transport : Exemption for the purposes of ADR disposal 594

Ship Transport : IMDG Code – UN 1044 class 2.2 Fire Extinguishers

File name	Type of document	Fire Extinguisher Model	Date	Rele.	Check	Rev.	Pag.
19258-400_GW25P_ Technical Manual	Technical Manual	GW25P_19258-400	04/06/2024	M.R		2	2/3

COMPONENTS AND SPARE PARTS LIST



NUM.	DESCRIPTION	CODE
1	Valve 2"-F	0214RV
1.1	O-ring valve	0203
1.2	Tamper seal (black)	0286N
1.3	Safety pin	0282-1
1.4	Safety device	0263R
2	Pressure gauge	1576
3	Safety pin seal	0285
4	Gasket	n.a.

NUM.	DESCRIPTION	CODE
5	PVC dip tube	18401
6	Cylinder	18302
7	Hose	18421-5
8	Dispensing pistol	2181-4
9	Dispensing nozzle	1645-5
10	Wheel + stop wheel (diam. 300mm)	0124V
11	Label	18366-40

The spare part at number 1 (valve) includes already all others components indicated from 1.1 to 1.4
 "n.a." mean that the component is not available as single spare part.

File name	Type of document	Fire Extinguisher Model	Date	Rele.	Check	Rev.	Pag.
I9258-400_GW25P_ Technical Manual	Technical Manual	GW25P_I9258-400	04/06/2024	M.R		2	3/3