

Technical Manual



www.emme-italia.com

Via del Molino, 40 - 52010 Corsalone (AR) - Italy - info@emme-italia.com - Tel. +39.0575.511320
P.IVA/ C.F. 11208251006 - R.E.A. AR-159122

GW100P 19118-400L : Wheeled Fire Extinguisher, 100 L Foam

EXTINGUISHING AGENT SUITABLE FOR LITHIUM BATTERIES



FLUORINE FREE



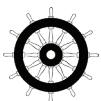
DISPENSING PISTOL WITH ROTATING CONNECTION

- CYLINDER
Stainless steel AISI 304, powder painting, Red Ral 3000.
- EXTINGUISHING AGENT
Fluorine free foam, water based.
- PROPELLANT
Nitrogen (N₂).
- VALVE
2"-F, brass body, lever with green painting Ral 6018.
- USE
A B fire rating (solid materials, flammable liquids).
- BRACKET
Chassis on wheels, welded at the cylinder, red painting Ral 3000.
- DISPENSING PISTOL
Body in plastic material. The rotating connection allow an easy unroll of hose.

Note: image is for illustrative purpose only, the product purchased can have some differences

100 L foam wheeled fire extinguisher, temperature range from +5°C to +60°C, manufactured in accordance to UNI EN 1866-1, approved Marine Equipment Directive MED 2014/90/UE, certified according to the directive for pressure equipment PED 2014/68/EU. Quality Product certification guaranteed by Bureau Veritas Italia. Suitable for use on fire involving electrical voltages up to 1'000 V, at a distance of 1 meter.

ESTINTORE APPROVATO/CERTIFICATO:



FIRE RATING :



IV

File name	Type of document	Fire Extinguisher Model	Date	Rele.	Check	Rev.	Pag.
19118-400L_GW100P_ Technical Manual	Technical Manual	GW100P_19118-400L	18/02/26	S.R.		0	1/4

REPRODUCTION IS PROHIBITED

GW100P 19118-400L : Wheeled Fire Extinguisher, 100 L Foam

- **INSTALLATION** The installation must be carried out in accordance with the provisions in force in the country where the device is used. The commissioning and maintenance activities for maintaining efficiency must be carried out in accordance with the document **CSP_1-B_ENG** by qualified
- **USE**
- **MAINTENANCE** technical personnel and in compliance with the regulations in force in the country of use.

Any tampering or intervention carried out by unqualified personnel will void the product warranty.

It is recommended to place the device in a dry place protected from atmospheric agents.

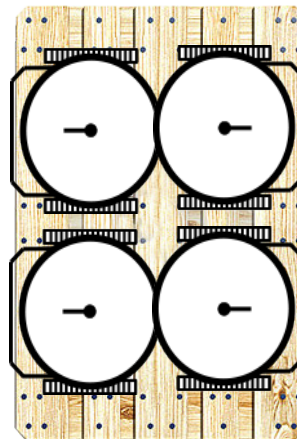
TECHNICAL SPECIFICATIONS

FIRE RATING	A IV B
EXTINGUISHING AGENT	100% Green Wave Premix Lith-M
PROPELLANT	Nitrogen (N ₂), 15 Bar at 20°C
TEMPERATURE RANGE	+5°C / +60°C
NOMINAL CHARGE	100 Liters
FULL WEIGHT	~ 147 Kg
DIMENSIONS	Height 1350+/- 10 mm ; Width 595 +/- 10 mm Depth 550 +/- 15 mm
DISCHARGE TIME	~ 391 seconds
CYLINDER PRESSURE TEST	PT 30 bar
CYLINDER VOLUME	134 L
SAFETY DEVICE	Set between 21 and 26 bar
CYLINDER MATERIAL	Stainless steel AISI 304
TREATMENT	Outside: Sandblast and powder painting Ral 3000

PACKAGING

(Note: the packaging quantities and measurements are indicative and can be subject at change)

STANDARD
Maximum nr. 4 pieces for pallet
Pallet dimensions 100x120x150(h) cm



TRANSPORT DISPOSAL

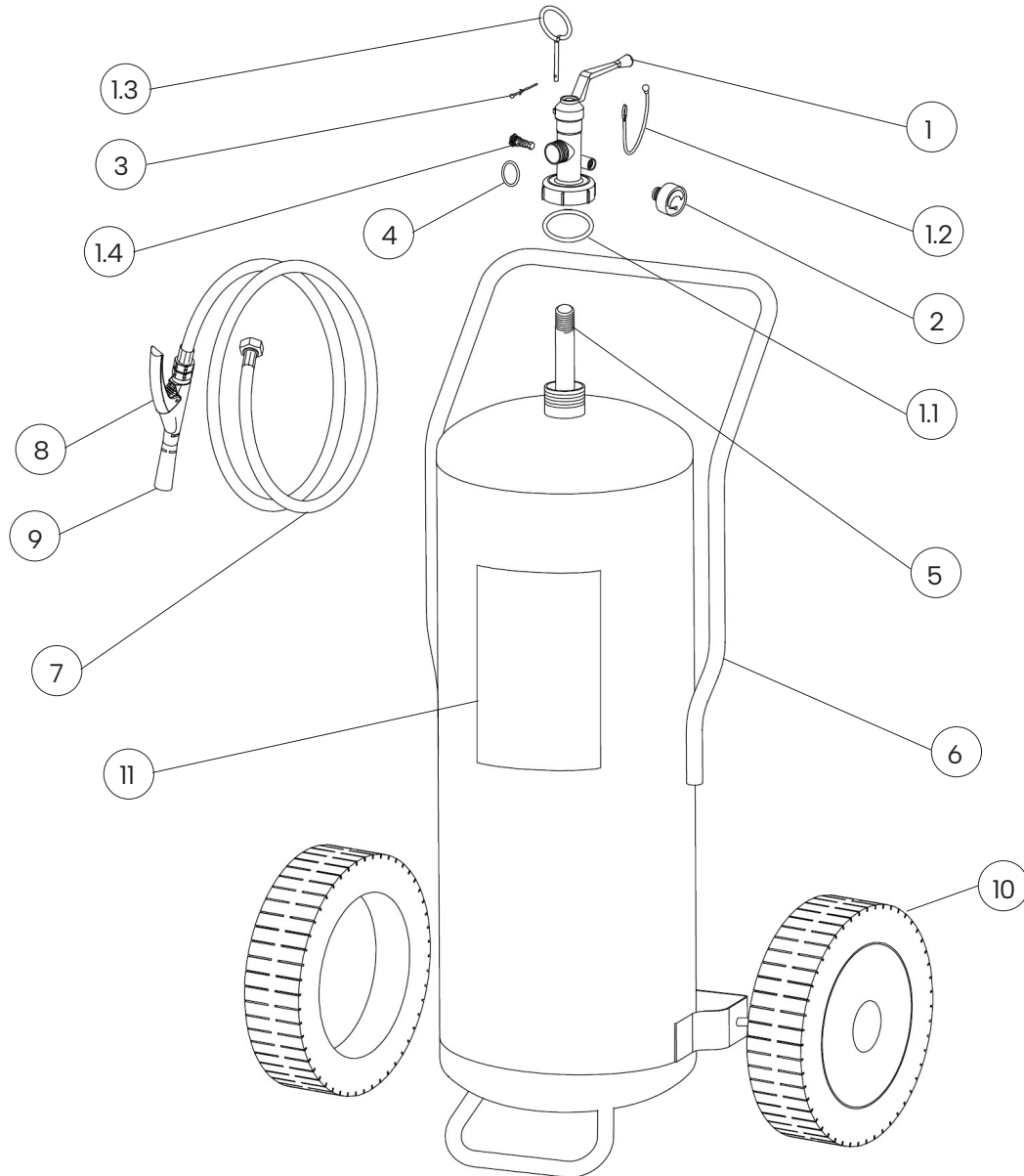
Land transport : Exemption for the purposes of ADR disposal 594

Ship Transport : IMDG Code - UN 1044 class 2.2 Fire Extinguishers

File name	Type of document	Fire Extinguisher Model	Date	Rel.	Check	Rev.	Pag.
19118-400L_GW100P_Technical Manual	Technical Manual	GW100P_19118-400L	18/02/26	S.R.		0	2/3

GW100P 19118-400L : Wheeled Fire Extinguisher, 100 L Foam

COMPONENTS AND SPARE PARTS LIST



NUM.	DESCRIPTION	CODE
1	Valve 2"-F	0214RV
1.1	O-ring valve	0203
1.2	Tamper seal (black)	0286N
1.3	Safety pin	0282-1
1.4	Safety device	0263R
2	Pressure gauge	1576
3	Safety pin seal	0285
4	Gasket	n.a.
5	PVC dip tube	0165

NUM.	DESCRIPTION	CODE
6	Cylinder	18339
7	Hose	18421-5
8	Dispensing pistol	2181-4
9	Dispensing nozzle	1645-5
10	Wheel (diam. 400mm)	0125
	Thick washer	2148-10
	Cotter pin stop wheel	9443
11	Label	18344-40L

The spare part at number 1 (valve) includes already all others components indicated from 1.1 to 1.4
 "n.a." mean that the component is not available as single spare part.

File name	Type of document	Fire Extinguisher Model	Date	Rele.	Check	Rev.	Pag.
19118-400L_GW100P_Technical Manual	Technical Manual	GW100P_19118-400L	18/02/26	S.R.		0	3/4

Prerequisite when using the fire extinguisher on lithium batteries

According to tests executed with this fire extinguisher, it's possible to stop the combustion of a lithium-ion battery with a water based fire extinguisher with foam additives. It has been verified that the use of the fire extinguisher allows to lower the temperature and control any re-ignitions of the cells present inside the battery (generated by the chain reaction of the same and due to their shape inside the battery pack). The fire extinguisher is therefore effective in containing the flames emanated from a battery with same or inferior characteristics compared to the one tested.

**NOTE: the test was executed on a new battery and so at full efficiency.*

SAFETY WARNING



The combustion of lithium-ion batteries releases very harmful gases and fumes. Direct exposure to high concentrations of gases emanating from the combustion of lithium-ion batteries can cause serious damage to health. Lithium-ion batteries can have unpredictable phenomena during fire, such as explosive reactions caused by the pressure of the cells inside the battery pack. It's advisable to use appropriate safety devices. The use of fire extinguisher is recommended for professional and expert staff. The use of fire extinguisher by uninformed people can lead to lower results and cause damage to involved people.

DISCLAIMER

The result of the tests performed refers exclusively to the fire extinguisher model used during the tests themselves. The fast development of lithium-ion batteries and fire extinguishers means that the performance achieved during the test phase is not guaranteed when using lithium-ion batteries or shutdown techniques other than those tested. It is not possible to understand where and to what extent these fire extinguishers can be installed due to the outer casing of the lithium-ion battery pack. The fire extinguishers tested are intended to help contain the principle of fire resulting from the triggering of a lithium-ion battery.

File name	Type of document	Fire Extinguisher Model	Date	Rele.	Check	Rev.	Pag.
19118-400L_GW100P_Technical Manual	Technical Manual	GW100P_19118-400L	18/02/26	S.R.		0	4/4