

EMME ANTINCENDIO

ITALIAN STYLE FOR A SAFER WORLD



First aid 2022

FIRST AID

MINIMUM BASE CONTENT
(PROVIDED BY DM)



CONTENT SUITABLE FOR FACILITIES WITH LESS THAN 3 WORKERS
(ATTACHMENT 2)



CONTENT SUITABLE FOR FACILITIES WITH EQUAL OR MORE THAN 3
WORKERS
(ATTACHMENT 1)



CONTENT SUITABLE FOR WORKERS OPERATING DISTANT FROM THE
HEADQUARTERS



CONTENT SUITABLE FOR HOUSES AND VEHI-
CLES



FIRST AID

BRIEFCASE ATTACHMENT 2 BASIC CONTENT UPTO 2 WORKERS, 1 DOC-

Code
CPS513

ATTACHMENT 2 BASIC CONTENT

Case made of orange shock-proof plastic, equipped with carrying handle, support for wall attachment, closure with 2 rotating clips.



L190XP90XH250

CONTENT

- 1 Copy of DM 388 del 15/07/03
- 2 Pair of sterile gloves
- 1 Disinfectant bottle 125 ml POVIDONE IODINE at 10% iodine PMC
- 1 Sterile physiological slution 250 ml EC
- 1 Bag of compressed sterile gauze cm. 18x40
- 3 Bags of compressed sterile gauze cm. 10x10
- 1 Sterile pliers
- 1 Pack of cotton wool
- 1 Pack of 10 assorted patches
- 1 Adhesive plaster spool m 5x2,5 cm.
- 1 Gauze bandage m 3,5x10 cm.
- 1 Bandage scissors
- 1 Tourniquet
- 1 ICE PACK single-use instant ice
- 1 Bag for medical waste
- Instructions

BRIEFCASE ATTACHMENT 1 BASIC CONTENT, FOR 3 OR MORE WORKERS, 2 DOCTORS

ATTACHMENT 1
BASIC CONTENT

Case made of orange shock-proof plastic, equipped with carrying handle, support for wall attachment, closure with 2 rotating clips.


Codice
CPS517


L395XP135XH270

CONTENT

- 1 Copy of DM 388 del 15/07/03
- 5 Pair of steril gloves
- 2 Disinfectant bottle 500 ml POVIDONE IODINE at 10% iodiine PMC
- 3 Sterile physiological solution 500 mL EC
- 1 Mask with splash guard
- 10 Bags of compressed sterile gauze cm. 10x10
- 2 Bags of compressed sterile gauze cm. 18x40
- 2 Sterile drapes cm 40 x 60 DIN 13152-BR
- 2 Sterile pliers
- 1 Pack of cotton wool
- 1 Elastic tubular bandage case
- 2 Packs of 10 assorted patches
- 2 Adhesive plaster spool m 5 x 2,5 cm.
- 1 Pair of bandage scissors
- 3 Tourniquets
- 2 ICE PACK instant ice
- 2 Bags for medical waste
- 1 PERSONAL sphygmomanometer with stethoscope
- 1 Clinical thermometer



FIRST AID



BRIEFCASE ATTACHMENT 1 BASIC CONTENT, FOR 3 OR MORE WORKERS, **3 DOCTORS**



Code

CPS153



Container without support



L292XP215XH90

CONTENT

- 1 Copy DM 388 of 15/07/03
- 2 Pair of sterile gloves
- 1 Disinfectant bottle 500 ml
POVIDONE IODINE at 10% iodine PMC
- 1 Sterile physiological solution 500 ml EC
- 1 Splashguard WI
- 3 Bag of compressed sterile gauze cm.
10x10
- 1 Bag of compressed sterile gauze cm.
18x40
- 1 Sterile pliers
- 1 Pack of cotton wool
- 1 Pack of 10 assorted patches
- 1 Adhesive plaster spool m 5 x 2,5 cm.
- 1 Gauze bandage m 3,5x10cm
- 1 Pair of bandage scissors
- 1 Tourniquet
- 1 ICE PACK instant ice
- 1 Bag for medical waste

Instructions



FIRST AID

BRIEFCASE ATTACHMENT 1 BASIC CONTENT, FOR 3 OR MORE WORKERS, 4 DOCTORS



Code

CPS154



Container without support



L460XP345XH145

CONTENT

- | | |
|----|---|
| 1 | Copia DM 388 of 15/07/03 |
| 5 | Pair of sterile gloves |
| 2 | Disinfectant bottle 500 ml
POVIDONE IODINE at 10% iodine PMC |
| 3 | Sterile physiological solution 500 ml EC |
| 1 | Mask with splash guard |
| 10 | Bags of compressed sterile gauze cm.
10x10 |
| 2 | Bags of compressed sterile gauze cm.
18x40 |
| 2 | Steile drapes cm 40 x 60 DIN 13152-BR |
| 2 | Sterile pliers |
| 1 | Pack of cotton wood |
| 1 | Elastic tubular bandage case |
| 2 | Packs of 10 assorted patches |
| 2 | Adhesive plaster spool m 5 x 2,5 cm. |
| 1 | Pair of bandage scissors |
| 3 | Tourniquets |
| 2 | ICE PACK instant ice |
| 2 | Bags for medical waste |
| 1 | PERSONAL sphygmomanometer with
stethoscope |
| 1 | Cinical thermometer |

BRIEFCASE ATTACHMENT 1 BASIC CONTENT, UP TO 2 WORKERS 1/P

Code

CPS519



ATTACH. 2 BASIC CONTENT

White plastic wardrobe with 3
compartments, 2 internal shel-
ves and snap closure..

CONTENT

- | | | | |
|---|---|---|-----------------------------------|
| 1 | Copiy DM 388 of 15/07/03 | 1 | Pack of 10 assorted patches |
| 2 | Pair of sterile gloves | 1 | Adhesive plaster spool m 5x2,5 cm |
| 1 | Disinfectant bottle 125 ml POVIDONE
IODINE at 10% iodine PMC | 1 | Gauze bandage m 3,5x10 cm |
| 1 | Pair of bandage scissors | 1 | Torniquet |
| 1 | Sterile physiological solution 250 ml CE | 1 | ICE PACK single-use instant ice |
| 1 | Bag of copressed sterile gauze 18x40 | 1 | Bag for medical waste |
| 3 | Bags of compressed sterile gauze 10x10 | 1 | Instructions |
| 2 | Packs of cotton wool | | |
| 1 | Sterile plier | | |

L220XP140XH370





FIRST AID

METAL WARDROBE ATTACHMENT 1 BASIC CONTENT, 3 OR MORE WORKERS,

102M



L300XP140XH460

Code

CPS523

ATTACHMENT 1 BASIC CONTENT

White coated metal wardrobe with epoxy powder. Baked at 180°, with 3 compartments, 2 internal shelves and locking with key.

CONTENT			
1	Copy DM 388 of 15/07/03	1	Pack of cotton wool
5	Pair of steril gloves	1	Elastic tubular bandage case
2	Disinfectant bottle 500 ml POVIDONE IODINE at 10% iodine PMC	2	Packs of 10 assorted patches
1	Mask with splash guard	1	Pair of bandage scissors
3	Sterile physiological solution 500 ml	3	Tourniquets
10	Bags of compressed sterile gauze 10x10	1	ICE PACK multi-purpose instant ice
2	Bags of compressed sterile gauze 18x40	2	Bags for medical waste
2	Sterile drapes cm 40x60 DIN 13152- BR	1	Clinical thermometer
2	Sterile pliers	1	PERSONAL sphygmomanometer with stethoscope
2	Adhesive plaster spool m 5x2,5 cm.	Instructions	

TRIX BRIEFCASE



Briefcase in polypropilene, carrying handle and 2 clips of snap closure.

Code

CPS011

L235XP195XH45



CONTENT	
2	Bags of sterile gauze cm.18x40
1	Pair of scissors
1	medical plier
1	Sterile drapes 60x40
1	Pack of cotton wool of 5 g
1	Pack of 10 patches
1	Pack of paper tissues
3	Disinfectant alcohol napkins
1	Adhesive bandage cm.10x6
1	Hydrophilic gauze bandage
1	Plaster rool m.1x2 cm.
1	Pair of protective sterile gloves
1	Sponge

FIRST AID

KIT FOR ABRASIONS



L240XP190XH50

Briefcase in polypropilene, carrying handle and 2 clips of snap closure.

CONTENT

- 2 Bags of sterile gauze cm.18x40
- 1 Pair of scissors
- 1 Medical plier
- 1 Sterile drape 60x40 cm
- 1 VENTO mouth- to -mouth revivor
- 1 Pack of 10 patches
- 1 Pack of paper tissues
- 3 Disinfectant alcohol napkins
- 1 Elasticized bandage 4x10 cm
- 1 Adhesive bandage 10x6 cm
- 1 Roll plaster m.5x1,25 cm.
- 1 Pair of protective sterile gauze
- 1 Sponge

Code

CPS360

DRESSING FOR ABRASIONS



3 sachets of 3,5 gr. gel, ideal for temporary pre-medical first aid actions on burns, scaldings and solar burns. Pack of 10 sachets.

Code

PRE010



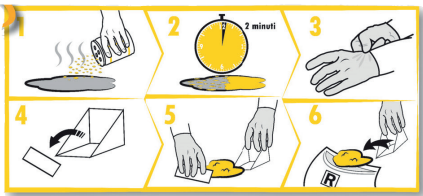
FIRST AID

KIT FOR THE COLLECTION OF BIOLOGICAL LIQUIDS



Code

CPS614



L285XP210XH87

CONTENT

- 2 Absorbent powder bags
- 1 Dustpan+ binder
- 2 Waste collection bags
- 1 Pair of gloves
- 1 Mask with visor
- 1 Disinfectant for surfaces
- 1 Hand disinfectant
- 3 Cleaning cloths
- 3 Alcohol wipes

Emergency kit for the collection of biological liquids, urine, blood, vomit.. They have a high absorbent capacity and in contact with the liquid mass they are able to transform it into a gelatinous one that can be collected without leaving residues. Absorption and thickening will take place in 3 / 5 minutes

ATTACHMENT 1 BASIC CONTENT FOR 3 OR MORE WORKERS



Code

PDM089

CONTENT

1	Copy DM 388 del 15/07/03	2	Packs of 10 assorted patches
5	Pair of sterile gloves	2	Adhesive plaster spool m 5x2,5 cm
1	Mask with splash guard	1	Sphygmomanometer with stethoscope
2	Disinfectant bottle 125 ml POVIDONE IODINE at 10% iodine PMC	1	Gauze bandage m 3,5x10 cm
3	Physiological solution 250 ml EC	1	Pair of bandage scissors
2	Bags of compressed sterile gauze cm 18x40	3	tourniquets
10	Bags of compressed sterile gauze cm. 10x10	2	ICE PACK single-use instant ice
2	Sterile pliers	2	Bags for medical waste
2	Drapes 40x60 cm DIN 13152-BR	1	Clinical thermometer with case EC
1	Elastic tubular bandage case	1	Instructions
1	Pack of cotton wool		



FIRST AID

ATTACHMENT 2 BASIC CONTENT FOR UP TO 2 WORKERS



Code

PDM090

B



CONTENT			
1	Copy DM 388 of 15/07/03	1	Pack 10 assorted patches
2	Pair of sterile gloves	1	Adhesive plaster spool m 5x2,5 cm
1	Disinfectant bottle 125 ml POVIDONE IODINE al 10% iodine PMC	1	Gauze bandage m 3,5x10 cm
1	Physiological solution 250 ml EC	1	Pair of bandage scissors
1	Bag of compressed sterile gauze cm 18x40	1	Tourniquet
3	Bags of compressed sterile gauze cm. 10x10	1	ICE PACK single-use instant ice
1	Sterile pliers	1	Bag for medical waste
1	Pack of cotton wool		

ATTACHMENT 1 BASIC CONTENT, 3 OR MORE WORKERS WITHOUT SPHYGMOMANOMETER



Code

PDM091

In compliance with Ministerial Decree 388, is obligatory integrating the sphygmomanometer which is not included in this pack.

B



CONTENT			
1	Copy DM 388 of 15/07/03		
5	Pair of sterile gloves		
2	Disinfectant bottle 125 ml POVIDONE IODINE at 10% iodine PMC		
1	Mask with splash guard		
3	Bottles of sterile physiological solution 500 ml CE		
10	Bags of compressed sterile gauze cm. 10x10		
2	Bags of compressed sterile gauze cm 18x40		
2	Sterile drapes cm 40x60 DIN 13152-BR		
2	Sterile pliers		
1	Pack of cotton wool		
2	Packs of 10 assorted patches		
2	Adhesive plaster spool m 5x2,5 cm		
1	Elastic tubular bandage case		
2	Bags for medical waste	1	Pair of bandage scissors
1	Clinical thermometer EC	3	Tourniquets
		2	ICE PACK single-use instant ice



FIRST AID

KIT ADR STANDARD

Emergency kit for units destined for the transport of dangerous goods by road.
The content is in compliance with the legislation currently in force in Italy and in Europe.
Reference standards:

- DM 04/09/1996 implementation of the European Directive 94/55/CE
- DM 15/05/1996 implementation of the European Directive 96/86/CE
- DM 28/09/1999 implementation of the European Directive 1999/47/CE

IMPORTANT: the vehicles must have a suitable wheel blocking edge and any material required by the written instructions for the driver (TREM CARD) based on the goods transported (marginal 10,385).
nylon BAG 800/800, two handles and shoulder strap for transport, 2 compartments and yellow ADR writing on the side.
Bag dimensions : 560x230x370H

ADR STANDARD bag content:

- 2 Orange light signal lamps
- 4 Batteries for signal lamps
- 2 High visibility vests in accordance with EN471
- 2 Plastic torches
- 4 Batteries for torches (2 for each torch)
- 1 Pair of heavy protective neoprene gloves
- 1 Roll of white/red warning tape
- 2 Bottles 550ml of sterile saline solution ACQ414 for emergency eye washing and for a gentle cleaning and disinfection of non-injured skin
- 1 Soft kit first aid bag in accordance with DIN 13164



ADR GAS TRANSPORT BAG CONTENT:

- 2 Orange light signal lamps
- 4 Batteries for signal lamps
- 2 High visibility vests in accordance with EN471
- 2 Rubber torches
- 4 Batteries for torches
- 1 Pair of heavy protective gloves
- 1 Roll of warning tape
- 2 Bottles 550ml of sterile saline solution ACQ414 for emergency eye washing and for a gentle cleaning and disinfection of non-injured skin
- 1 Soft kit first aid bag in accordance with DIN 13164
- 1 Mask for full face protection (full face)
- 1 ABEK filter for mask

Code	Type
CPS619	Standard
CPS620	GAS

DROP- EYE WASHING STATION

Codice	CPS202
--------	--------



CONTENT	
2	Bottles of ml 500 saline sterile solution with eye cap (cod. ACQ414)
1	Mirror
1	Screws and plugs kit for wall application
Dimension: mm 320Lx410Hx80P	

Eye washing station consisting of 2 ml.500 single-use sterile saline solution bottles with fitted eye cap for quick use. Thermoformed surface with transparent front with dustproof closure equipped with mirror and supplied with screws and plugs kit for wall application.

FIRST AID

FLOOR-MOUNTED EMERGENCY SHOWER WITH EYE WASHER AND PEDAL



Code

7949

Installation: on the floor, on the wall, on the ceiling
Quick assembly of preassembled components.
Easy maintenance of removable and inspectable valves.

• Materials:

Galvanized steel pipes,
brass fittings,
aluminum base and pedals,
epoxy-anticorrosive painting
Eye wash with:

- trays in ABS
- aerated and regulated spray

According to DIN EN 246

Min.pressure 2 Bar

Courses:

30 L/min/ single heads

12 L/min/ eye wash

"DUAL DROP" EYE WASHING STATION

Emergency eye washing station.
Thermoformed surface with transparent front with dustproof closure supplied with screws and plugs for wall application.
The bottles are equipped with pre-assembled eye cap for a quick use.

Code

CPS209

CONTENT

- | | |
|---|---|
| 1 | Bottle saline solution (cod. ACQ414) |
| 1 | Neutral PH solution bottle (cod. ACQ405) |
| 1 | Mirror |
| 1 | Screws and plugs kit for wall application |



Dim. mm320Lx410Hx80P



FIRST AID

ASSORTED PATCHES 2 SIZES



Code CER075

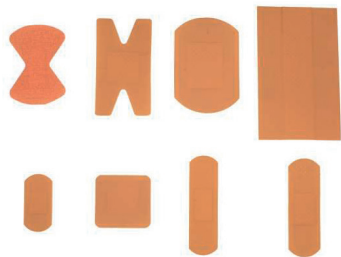
Package of assorted patches , multiple size, available in:
5 pieces 70x20 mm
5 pieces 60x20 mm

ASSORTED PATCHES



Code CER020

Package of 100 patches, multiple size, available in:
pz.40 dim. 2x7 cm
pz.10 dim. 2,4x7 cm
pz.20 dim. 4x2 cm
pz. 5 dim. 10x6 cm
pz. 5 dim. 4,8x7 cm
pz. 6 dim. 3,8x3,8 cm
pz. 5 H size
pz. 9 butterfly size



PRONTO SOCCORSO

ASSORTED PATCHES 5 SIZES (DETECTABLE BLUE)


Code
CER049

Package of 100 patches, multiple size, available in:

20 pz 9x72 mm

40 pz 30x72 mm

32 pz 55x18 mm

4 pz butterfly size

4 pz 72x50 mm

COTTON WOOL


Code
COT104

Package of 50 gr.

SINGLE USE INSTANT ICE


Code
KWK044

Plastic packaging

INSTANT ICE SPRAY


Code
QCS046

Package of 400 ml.



FIRST AID

ISOTHERMAL BLANKET, SILVER AND GOLD



Code	COP216
cm. 160x210	

DISINFECTANT BASED IN POVIDONE IODINE



Code	ML
JOD002	500
JOD003	125

STERILE SALINE SOLUTION FOR EYE WASHING



Code	SOL004
ML 500	

FIRST AID

SEMI AUTOMATIC SAMARITAN PAD 350P DEFIBRILLATOR

Compact and lightweight

The smallest semi-automatic defibrillator on the market.

Easy to use

The simultaneous presence of vocal commands ("Apply the electrodes", "Do not touch the patient" e "The patient can be touched safely") and visually, guide the user throughout the rescue process, even if you are in a noisy environment or with an hearing aid.

In addition, it can be used without extracting it from the containment backpack, further reducing the activation time of the device.

Biphasic wave SCOPE

It allows the defibrillator to handle higher impedant franges than concomitant devices, offering unprecedented performances: the best life-saving therapy with the lowest level of side effects for heart cells.

Resistant

The IP56 protection index is the highest protection index against the penetration of dust and water jets from any direction available in the market: rain, scrosci d'acqua, salt, humidity, mud and dirty do not affect the performance of the defibrillator.

Pad-Pak cartridge

It allows you to have a single expiration date to check, unlike other defibrillator brands. After use or 4 years from the production date, the cartridge is restored with istant restoration of machine operations.

Warranty: 8 years - Weight: 1,1 kg.

Custody - Insurance coverage



CODICE	MODELLO
DEF021	SAMARITAN 350P + CUSTODIA
DEF020	VERSIONE TRAINER
DEF022	PAD PAK PIASTRE ADULTO
DEF023	PAD PAK PIASTRE PEDIATRICHE



Emme Antincendio s.r.l.

Sede produttiva: via del molino 40 - 40B • 52010 corsalone (AR) • Tel 0575.511320 • fax 0575.531521 • info@emme-italia.com

Negozio di Arezzo: via Luigi Galvani 69 • 52100 Arezzo (AR) • Tel 0575.380106 • commerciale@emme-italia.com

Negozio di Milano: via Giuseppe di Vittorio 11 • 20017 Mazzo di Rho (MI) • Tel 02.93900399 • milano@emme-italia.com

Negozio di Padova: via Polonia 35 • 35127 Padova (PD) • Tel 049.6453824 • padova@emme-italia.com

Negozio di Reggio Emilia: Via Mario Gasparini 13 • 42124 Reggio Emilia (RE) • Tel 0522.572982 • reggioemilia@emme-italia.com

Negozio di Roma: Via Amaseno 22 • 00131 Roma (RM) • Tel 06.85911083 • roma@emme-italia.com