

EMME ANTINCENDIO

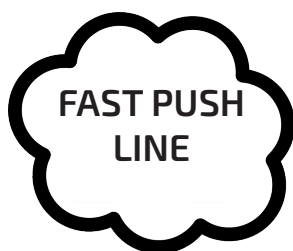
ITALIAN STYLE FOR A SAFER WORLD



Fire doors and smoke evacuators 2022

REI HANDLES DOOR/ EMERGENCY DOOR

ANTI-PANIC HANDLE FOR FIRE DOORS



CODE

1392

Handle to be installed in emergency and fire doors.

Bar to be requested separately.

Technical features:

- Carter in black painted aluminum
- Galvanized steel components suitable for fire doors

Equipment:

- Fixing screws
- Instructions
- Certifications EC



ANTI-PANIC HANDLE FOR FIRE DOORS

CODE

SPECIFICATIONS

1125

Length 840 mm

1126

Length 1200 mm

Handle to be installed in emergency and fire doors.

Technical features:

- Carter in black painted aluminum
- Red painted aluminum bar, can be shortened up to 300 mm
- Red bar included

Equipment:

- Fixing screws
- Instructions
- Certificationsn EC



FAST TOUCH
LINE



ANTI-PANIC HANDLE FOR FIRE DOORS

CODE

TYPE

0551

For primary leaf

0552

For secondary leaf

Technical features::

- Black nylon carter
- Galvanized steel components for fire doors
- Grey bar mm 1150
- Covering plate for holes

Equipment:

- Fixing screws
- Instructions
- Certificationsn EC
- Cylinder
- Half handle



TWIST NINZ
LINE



INDICE

INDEX

REI door handles	Pag.3
Accessories for handles	Pag.5
Accessories for emergency and fire doors	Pag.6
Spare parts for doors	Pag.9
Regulators for sliding doors	Pag.11
Gaskets for fire doors	Pag.11
Accessories for door maintenance	Pag.12
Centralized door closing	Pag.13
Spare parts for smoke-heat detectors	Pag.15

REI HANDLE DOORS/EMERGENCY DOORS

ANTI-PANIC HANDLE FOR FIRE DOORS

CODE	TYPE
9458	For primary leaf
9459	For secondary leaf

Technical features:

- Carter in black nylon
- Galvanized steel components for fire doors
- Grey bar mm 1150
- Covering plate for holes
- Equipment:
- Fixing screws
- Instructions
- Certifications EC
- Cylinder
- Half handle



SLASH NINZ
LINE



ANTI-PANIC HANDLE FOR APPLICATION

CODE	TYPE
1242	Primary leaf

Handle to be installed in emergency and fire doors.

Bar to be requested separately.

Technical features:

- Carter in painted aluminum
- Self-locking latch in aluminum alloy
- Pre-assembled plates for the fixing of additional locks
- Additional closure connectable to the central unit, supplied separately
- **Equipment:**
- Fixing screws
- Instructions
- Certifications EC



FAST PUSH
LINE



ANTI-PANIC HANDLE FOR APPLICATION

CODE	TYPE
9180	Length 1200 mm
9180-1	Length 840 mm

Handle to be installed in emergency and fire door.

Bar to be requested separately.

Technical features:

- Black painted aluminum carter
- Galvanized steel components suitable for fire doors
- **Equipment:**
- Fixing screws
- Instructions
- Certifications EC



LINEA
FAST TOUCH



ACCESSORIES FOR HANDLES

HORIZONTAL BAR OR ANTI-PANIC HANDLES

FAST PUSH
LINE



OUTER CONTROL FOR ANTI-PANIC HANDLES

FAST
LINE



Code

Type

9170

Red mm 900

9171

Red mm 1200

9172

Red mm 1500

Code

9168

Disabling knob with key
Nickel-plate cylinder

ELECTRIC HANDLE FOR ANTI-PANIC HANDLES



CISA

CODE

5007

Technical features:

- Reversible handle
- Neutral handle in absence of powering
- Mechanical emergency with key
- Wiring system with plug for a perfect isolation
- Led integrated in the handle body
- Operating voltage min. 12/24 V ca/cc.
- Operating tone min. 5 V, max 28 V
- European profile cylinder on request
- Handle square 8/9 mm

ELECTRIC STRIKE



CISA

CODE

CHARACTERISTICS

8050-1

Voltage 12 Vca

Without anti-repeater

8050-2

Voltage 12 Vcc

Without anti-repeater

Technical features:

Integrable with anti-panic handle. The anti-repeater, or opening memory, regulates the electric strike for the opening period. Without the anti-repeater the strike is open just for the time in which the electric pulse is received.

ACCESSORIES FOR HANDLES

LATCHES FOR EXTENSION OF LOCKS DOOR HANDLES NOT FIRE RESISTANT


Technical features:

- Carter in black painted aluminum
- Aluminum alloy latches in polished chrome
- Equipment:
- Fixing screws
- Assembly templates
- Instructions



N	Code	Type
1	1395	Pair of latches with two openings for side closure
2	1396	Pair of latches with top nozzle for top closure and floor nozzle for bottom closure

EXTERNAL HANDLES FOR ANTI-PANIC HANDLES

Technical features:

- disabling handle with key
- nickel plated cylinder, "fast" model



N	Code	Description
1	10886	With key on handle
2	10832	With key in the extended body



EXTERNAL PLATE WITH KNOB

Technical features:

- fixed knob and cylinder
- black painted
- suitable for anti-panic handles
- Instructions



Code 9169

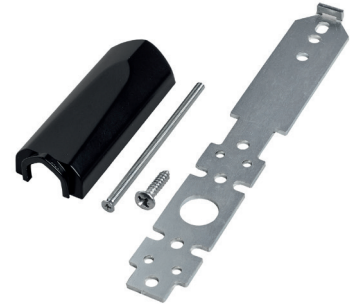
FULL HANDLE

Technical features:

- Black nylon plate
 - Suitable on REI doors
- Equipment:
- Key for handle
 - Quarry
 - Fixing screws
 - Instructions



Code 0566

ACCESSORIES FOR HANDLES**LOCK DEVICE FOR INTERNAL RODS****EXTERNAL BLIND PLATE FOR ANTI-PANIC HANDLES****Code****5010****Code****9167**

SPARE PARTS FOR DOORS

CLOSING SEQUENCER WITH TWO LEAF FIRE-RESISTANT DOORS



N	Code	Type
1	1444	Locher
2	1444-1	Ninz
3	0571	Padilla
4	1419	Meba
5	1441	Locher
6	1442	Dierre up to 1600

AIRPLANE DOOR CLOSURE FOR NON-FIRE RESISTANT DOORS



With stop on the mechanical arm

Code	Specifications
9192	Aluminum finish
0570	Black finish

AIRPLANE DOOR CLOSURE FOR FIRE DOORS



For fire doors from 40 kg to 100kg

Code	Specifications
0533	Without final stroke

AIRPLANE DOOR CLOSURE FOR FIRE DOORS



Without stop

Code	Specifications
9192-1	Aluminum finish
0570-1	Black finish

AIRPLANE DOOR CLOSURE WITH SLIDING DOORS



Silver finish

Code	8051-1
For doors up to 80kg, width 1100mm	

AIRPLANE DOOR CLOSURE WITH SLIDING DOORS



Silver finish

Code	8051
For doors up to 60 kg, width 950 mm	

FUSE FOR FIRE-FIGHTING DOORS



Code	Temp.
0579	70 °
5012	90 °

SPARE PARTS FOR DOORS

ANTI-PANIC SPLIT BOLT



Code	8484
------	------

BOLT FOR FULL HANDLE



Code	4670
------	------

SHORT QUARRY FOR SECONDARY DOOR



Code	4671
------	------

SHIM WASHER FOR PINS WITH SPRING



Inner 19mm - Outer 26mm - Thickness 3mm - Packing of 20 pz

Codice	1402-2
--------	--------

HALF SHIM WASHER FOR SPRING PINS



Packing of 20 pz
Thickness 0,5mm

Code	1463
------	------

HALF CYLINDER FOR FIRE-PRO-OF DOORS



Code	0556
------	------

CYLINDER FOR FIRE-RESISTANT DOORS



Code	0559
------	------

PIN WITH PADILLA SPRING



Code	0553
------	------

PIN WITHOUT PADILLA SPRING



Code	0554
------	------

PIN WITHOUT DIERRE SPRING



Code	1400
------	------

PIN WITH NINZ SPRING



Code	10695
------	-------

LOWER GUIDE ROLL FOR SLIDING DOORS WITH 1 LEAF BRAND LEVERIN



Code	5011
------	------

RATCHET FOR SPRING HIGE



Packing of 10 pz

Code	0555
------	------



SPARE PARTS FOR DOORS

LOCK FOR DOOR STANDARD



Code 0568

LOCK FOR DOOR ANTI-PANIC



Code 0569

COUNTERLOCK FOR DOOR WITH 2 LEAVES E 12 /REI PADIL-



Code 1162

COUNTERLOCK FOR DOOR WITH 2 LEAVES E12/REI MEBA



Code 1401

COUNTERLOCK FOR DOOR WITH 2 LEAVES E12/REI LOCHER



Code 1227

COUNTERLOCK FOR DOOR WITH 2 LEAVES E12/REI DIERRE



Code 1194

COUNTERLOCK FOR DOOR WITH 2 LEAVES E12/REI NINZ



Code 1413

ELECTRIC LOCK ANTI-PANIC CYLINDER



MITO-CISA
Series

Code 8052

Technical features:

Electric lock with internal operating latch and anti-panic handle, with electric handle activation and/or key



MECHANICAL LOCK ANTI-PANIC CYLINDER



Code 8053

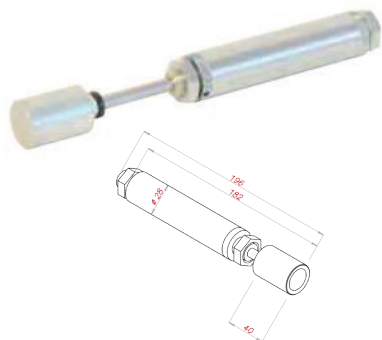
Technical features:

Latch only with provision for additional closures.



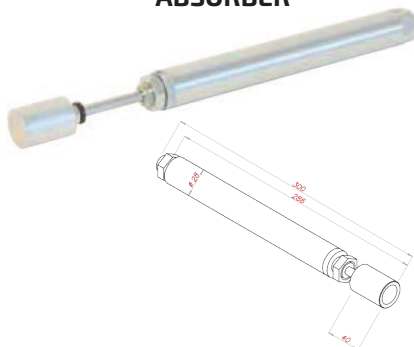
CLOSING REGULATORS FOR SLIDING DOORS

SHORT HYDRAULIC SHOCK ABSORBER



Code	5050
------	------

LONG HYDRAULIC SHOCK ABSORBER



Code	5052
------	------

TELESCOPIC FIXING SUPPORT "WALL" OR "FLOOR" ELECTROMAGNET



Code	Lenght
0575	140-220
5046	218-360

HOLDING ELECTROMAGNET IN STEEL CARTER



Code	5025-1
------	--------

FIXED COUNTERPLATE



Code	5040
------	------

CONTROPIASTRA SNODATA



Code	5041
------	------

GASKETS FOR FIRE DOORS



CHARACTERISTICS:

Made with a special mixture of thermo-expanding and binding carbon releasing water vapor which, combined with thermoplastics, obtains a thermo-expanding sealing effect with a soling and heat absorption function, preventing the passage of fire, fumes and gases.

Code	Description
1962	Thermo-expanding gaskets CL1 black 10 mm (roll of 25 ML.)
0580	Thermo-expanding gaskets CL1 black 15 mm (roll of 25 ML.)
0207	Thermo-expanding gaskets CL1 black 20 mm (roll of 25 ML.)
0208	Thermo-expanding gaskets CL1 black 24 mm (roll of 25 ML.)
0532	Thermo-expanding gaskets CL1 black 40 mm (roll of 25 ML.)
0209	Thermo-expanding gaskets CL1 black 48 mm (roll of 25 ML.)

ACCESSORIES FOR DOOR MAINTENANCE

MECHANICAL DYNAMOMETER


Code
0423

Mechanical dynamometer with pressure test, peak-hold function

Characteristics

- Double reading scales: Newton and kg readable at the same time
- Rotating viewer to facilitate the adjustment of the device
- Peak-hold function thanks to the sliding indicator
- Can be mounted on all manual test stands
- Reset by pressing a single button
- Supplied with sturdy case
- Standard composition: as in the illustration, Extension pole: 90 mm

Technical data

- Accuracy: 1 % di [Max]
- Dimensions: LxPxA 232x60x51 mm
- Threading: M6
- Net weight approx. 0,6 kg
- Measuring range 500 N
- Division 2,5 N

LIFTER


Code
10851

Lifting max 100 Kg

Foot lift for raise and lower doors with a simple foot operation. Used for the installation of doors, windows, furnitures and fitted wall. Lifting max 100 kg.

SUCTION CUP


Code
10852

Sollevamento max 150 Kg

SPATULAS SET


Code
10855

2 plastic spatulas of various sizes for glass lifting

CENTRALIZED DOOR CLOSING

SINGLE ZONE FIRE ALARM CONTROL PANEL

Dimensions: mm. 240 x 150 x 48

Power supply:

Main, from 230 Vac 50-60Hz mains

Auxiliary, supplied by n. 2 batteries 12 Vdc 1,1/1,3 Ah
(art. 1137-1 mandatory and supplied separately)

Operational area: single

Main panel with Led for the luminous indication of the operating status of the control unit, with the following displays:

- fire alarm
- presence/absence of mains
- presence/absence of the auxiliary voltage (battery)
- general failure of the control panel
- line fault of the detector (s)
- line fault of the remote alarm activation button (s)
- manual out of service status of the control panel
- siren line fault
- power supply of the electromagnets
- system failure

Possibility to put the control panel out of service for the maintenance of the system.

Identification and reporting (visual and sound) of the buttons of remote control panel activation.

Possibility of delay on the disconnection of the holding electromagnets.

Compliance: EN54-2 (central) ed EN54-4 (power pack)

CODE

0576



CENTRALIZED DOOR CLOSING

COMBINED SMOKE/HEAT DETECTOR



CODE	0576-1
------	--------

White plastic box
 Dimensions : mm. 110 diameter x 54 height
 Power supply : da 12 Vdc a 33 Vdc
 Current absorption in alarm : 12 - 45 mA
 Operating temperature : from -20 °C to + 70 °C
 Additional detector complete with base for ceiling fixing , connectable to article 0576
 Detector in compliance with UNI EN 54-7

THERMOVELOCIMETRIC HEAT DETECTOR



CODE	0576-2
------	--------

White ABS box
 Dimensions : mm. 110 diameter x 54 height
 Power supply : from 12 Vdc to 33 Vdc
 Absorption in stand-by : 80 microA / in alarm : 20 mA
 Operating temperature:
 thermal fixed temperature of 60 °C.
 Additional detector complete with base for ceiling fixing , connectable to article 0576
 Compliance: EN54-5

RESET BUTTON



CODE	0576-5
------	--------

White plastic box for ceiling fixing
 Dimensions : mm. 81 x 67 x 55
 The fire alarm silencing button must be positioned near the power unit 0576 and in any case no later than 100cm from it.

SINLGL E ZONE CONTROL UNIT BATTERY



CODE	1137-1
------	--------

Battery in lead at 12 Vdc rechargeable .
 Sizes: mm. 97 x42 x 53e
 Power: 1,2 Ah

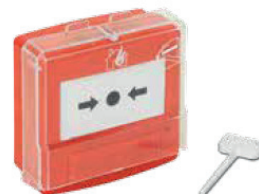
ELECTRONIC SIREN



CODE	0576-3
------	--------

6 selectable tones
 Second tone for alarms
 two stage
 Volume setting
 For indoors and outdoors
 Siren IP 65, basi IP 54 or IP 65
 Power supply from 9 to 28 Vcc
 Red or white color
 Operating temperature: from: -25°C to +70°C
 Type of connection:
 Double clamps (6) for derivation.
 Compliance : EN54-3

CASE FOR PRESSURE ALARM ACTIVATING



CODE	0576-4
------	--------

ABS Box
 Dimensions mm. 99 x 95 x 43
 Internal exchange contact C./N.A./N.C.
 Manual reset of the contact
 Protection rating: IP41
 Transparent plexiglass cover for the protection of the casing activation button
 Red box (for connection to fire systems)
 Use: pressure on the plastic front plate activates the commutation of the electrical contact.
 Compliance: EN54-11

SPARE PARTS FOR E.F.C.
CO2 SINGLE-USE BOTTLES (NOT RECHARGEABLE)


Code	Gr	Fitting	T.max	Notes
9516	28	UNF 1/2" - 20	93°	
9517	38	UNF 1/2" - 20	93°	
9518	55	UNF 1/2" - 20	93°	
9520	55	UNF 1/2" - 20	182°	
9521-1	80	UNF 1/2" - 20	93°	
9522	150	UNF 1/2" - 20	50°	only x Box
9523	300	UNF 1/2" - 20	50°	only x Box
9524	500	UNF 1/2" - 20	50°	only x Box
9525	750	UNF 1/2" - 20	50°	only x Box
9526	1000	UNF 1/2" - 20	50°	only x Box

ADAPTER FOR CO2 BOTTLES (ALL THREADS ON THE MARKET)


N	Code	Adapter
1	9571-5	From UNF 1/2"-20 to 5/8"
2	9571-4	From UNF 1/2"-20 to
3	9571-3	From UNF 1/2"-20 to M10x1
4	9571-1	From UNF 1/2"-20 to M18x1,5
5	9571-2	From UNF 1/2"-20 a

THERMAL FUSES


	Code	Diam.	Lenght	T.max	Color
1	9500	5 mm	937 mm	68°	Red
2	9501	5 mm	937 mm	93°	Green
3	9503	5 mm	937 mm	141°	Blue
4	9510	12 mm	826 mm	68°	Red
5	9511	12 mm	826 mm	93°	Green
6	9513	12 mm	826 mm	141°	Blue

ELECTROMAGNETIC ACTUATOR 24V THREAD M16X1,5


Code	Description
9573-1	ETK 1.0 TA2 ELECTROMAGNETIC ACTUATOR FOR TAVE 2. Operating voltage 24VDC (+15%/-10%) - Power 3W, M16x1,5
9573-2	ETK 1.0 TA3 ELECTROMAGNETIC ACTUATOR FOR TAVE 3.xx Operating voltage 24VDC (+15%/-10%) - Power 3W, M16x1,5
9573-3	ETK 1.0 TAJ ELECTROMAGNETIC ACTUATOR For other valves, Operating voltage 24VDC (+15%/-10%) - Power 3W, M16x1,5

PYROTECHNIC ACTUATOR


Code	Description
10798-1	Pyrotechnic actuator CM-17-332B Thread M8x0,75 -
10872	Pyrotechnic actuator TED3 Thread. M16x1,5 - 1,75 A /
10872-1	Pyrotechnic actuator with firing pin type COMET - Firing pin thread M16x1,5
10872-2	Pyrotechnic actuator with firing pin type UCS - Firing pin thread M10x1,0
9569	Firing pin for pyrotechnic type TED2 / COMET Thread

REPLACEMENT PARTS FOR SMOKE/HEAT DETECTORS



Without
canister
Cod. 1077

N.B.: the aforementioned test canisters (codes 1085 and 1086) are only used to test the correct functioning of the gas detectors (max 10 detectors) and cannot be used for their calibration.

N	Code	Description
1	1088	Bag for carrying instruments and accessories for detectors
2	1082	Test tool for optical/ionic detectors
3	1077	Spray canister for detector tests (about 350 tests)
4	1083	Universal tool for detector extraction
5	1084	220V tool for thermal detector tests
3	1085	50% methane gas test canister with dispenser (max 10 tests)
3	1086	CO test canister (max 10 tests)
3	1086-1	Canister spray for cleaning detectors
8	1087	Telescopic tube of 4,5 ML.
-	1230	Extension of 1 ML. for Cod. 1087
10	0581	Rod for testing detectors Mt.5 with diffuser and magnet

SPARE GLASS FOR BUTTON



Size mm 7,6 x 4

Code	1072
Packing	10 pz.

BUZZER WITH CANISTER UNDER PRESSURE



Code	6083
Capacity	300ml



Emme Antincendio s.r.l.

Sede produttiva: via del molino 40 - 40B • 52010 corsalone (AR) • Tel 0575.511320 • fax 0575.531521 • info@emme-italia.com

Negozio di Arezzo: via Luigi Galvani 69 • 52100 Arezzo (AR) • Tel 0575.380106 • commerciale@emme-italia.com

Negozio di Milano: via Giuseppe di Vittorio 11 • 20017 Mazzo di Rho (MI) • Tel 02.93900399 • milano@emme-italia.com

Negozio di Padova: via Polonia 35 • 35127 Padova (PD) • Tel 049.6453824 • padova@emme-italia.com

Negozio di Reggio Emilia: Via Mario Gasparini 13 • 42124 Reggio Emilia (RE) • Tel 0522.572982 • reggioemilia@emme-italia.com

Negozio di Roma: Via Amaseno 22 • 00131 Roma (RM) • Tel 06.85911083 • roma@emme-italia.com