

Use and Maintenance User Manual



Scan QR Code and visit the website to see more details about our products



Emme Antincendio S.r.l.
www.emme-italia.com

Via del Molino, 40 - 52010 Corsalone (AR) - Italy - info@emme-italia.com - Tel. +39.0575.511320
Other branches Emme Antincendio s.r.l. in Italia : Milano - Padova - Roma - P.IVA/ C.F. 11208251006 - R.E.A. FI-632545

23058-2: Portable Fire Extinguisher, 5 Kg Carbon Dioxide



- **CYLINDER**
Aluminum Alloy AA6061 , external powder coating, color Red Ral 3000.
- **EXTINGUISHING AGENT**
Carbon Dioxide 99,99 % (CO₂)
- **VALVE**
Not magnetic M. 25x2, lever inox.
- **USE**
Fire Rating class B (flammable liquids)

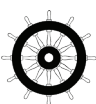
NOTE:
Fire extinguisher built with low magnetic conductivity components .

Note: image is for illustrative purpose only, the product purchased can has some difference

5 Kg Carbon Dioxide Fire Extinguisher, operating temperature from -30 ° C to + 60 ° C, built in accordance with the standard **UNI EN 3-7 (D.M. 7.1.2005)**, approved by Marine Equipment Directive **MED 2014/90/UE**, certified according to Pressure Equipment Directive **PED 2014/68/EU**.

All fire extinguishers are voluntarily certified with a Product Quality control guaranteed by Bureau Veritas Italia. Can be used on live electrical equipment up to 1'000 V, at a minimum distance of 1 meter.

APPROVED/CERTIFIED FIRE EXTINGUISHER:



FIRE RATING:



89

© REPRODUCTION IS PROHIBITED

File name	Type of document	Fire Extinguisher Model	Date	Rele.	Check	Rev.	Pag.
23058-2_User manual	Use and Maintenance user manual	23058-2	29/06/2023	M.R		1	1/2

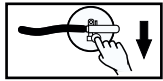
23058-2: Portable Fire Extinguisher, 5 Kg Carbon Dioxide

TECHNICAL SPECIFICATIONS

FIRE RATING	89 B
EXTINGUISHING AGENT	Carbon Dioxide 99,99 % (CO ₂)
TEMPERATURE RANGE	-30°C / +60°C
NOMINAL CHARGE	5 Kg
FULL WEIGHT	~ 12,3 Kg
DIMENSIONS	Height (base - valvole) 670 +/- 5 mm Diameter (cylinder) 152 +/- 2 mm
DISCHARGE TIME	~ 11,5 seconds

MODALITY OF USE

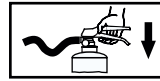
Follow the operating Instructions printed on the main fire extinguisher label



1) REMOVE SAFETY PIN



2) HOLD THE HOSE



3) SQUEEZE GRIP LEVER



4) AIM THE JET AT BASE OF FIRE

Follow the instructions present on the marking label.

ATTENTION: Do not direct the jet at people. If you're dispensing in close spaces, then ventilate the room. The fire extinguisher can be used on fire involving electrical voltages up to 1'000 V, at a distance of 1 meter.

INSTALLATION AND COMMISSIONING

The installation of the fire extinguisher must be performed according to the rules in force. The fire extinguisher have to be installed in a safe and stable support, with a gripping at a maximum recommended height of 110 cm.

The fire extinguisher must be free of obstructions and marked by an appropriate identifying label.

It is recommended to install it in a dry place, protected from the atmospheric agents.

It is recommended the installation of water-based fire extinguishers for close spaces.

The commissioning of the fire extinguisher for the protection of the area must be carried out by qualified personnel according to the rule in force within 6 months from the date of production and/or placing on themarket, reported in the declaration of conformity released by the producer.

MAINTENANCE PERIODS FOR EFFICIENCY GUARANTEES

The mantaning of the product efficiency have to be carried out from the responsible person.

It is recommended a visual check of the efficiency state every three months since the commissioning time apart if there are different dispositions.

It is advisable to : verify that the fire extinguisher would be in a correct position, safe and stable, free from impediment for the use; identify the fire extinguisher with an appropriate identification sign; make sure of its structural integrity and that is free from any damage; check that the original documentations is available.

Any restoration operations and instrumental checking have to be realized exclusively by qualified personnel who possess the necessary documentations to maintain the constancy of the product performance.

Any tampering or intromission by unauthorized personnel voids the product warranty.

File name	Type of document	Fire Extinguisher Model	Date	Rele.	Check	Rev.	Pag.
23058-2_user manual	Use and Maintenance user manual	23058-2	29/06/2023	M.R		1	2/2